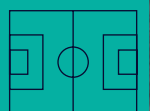
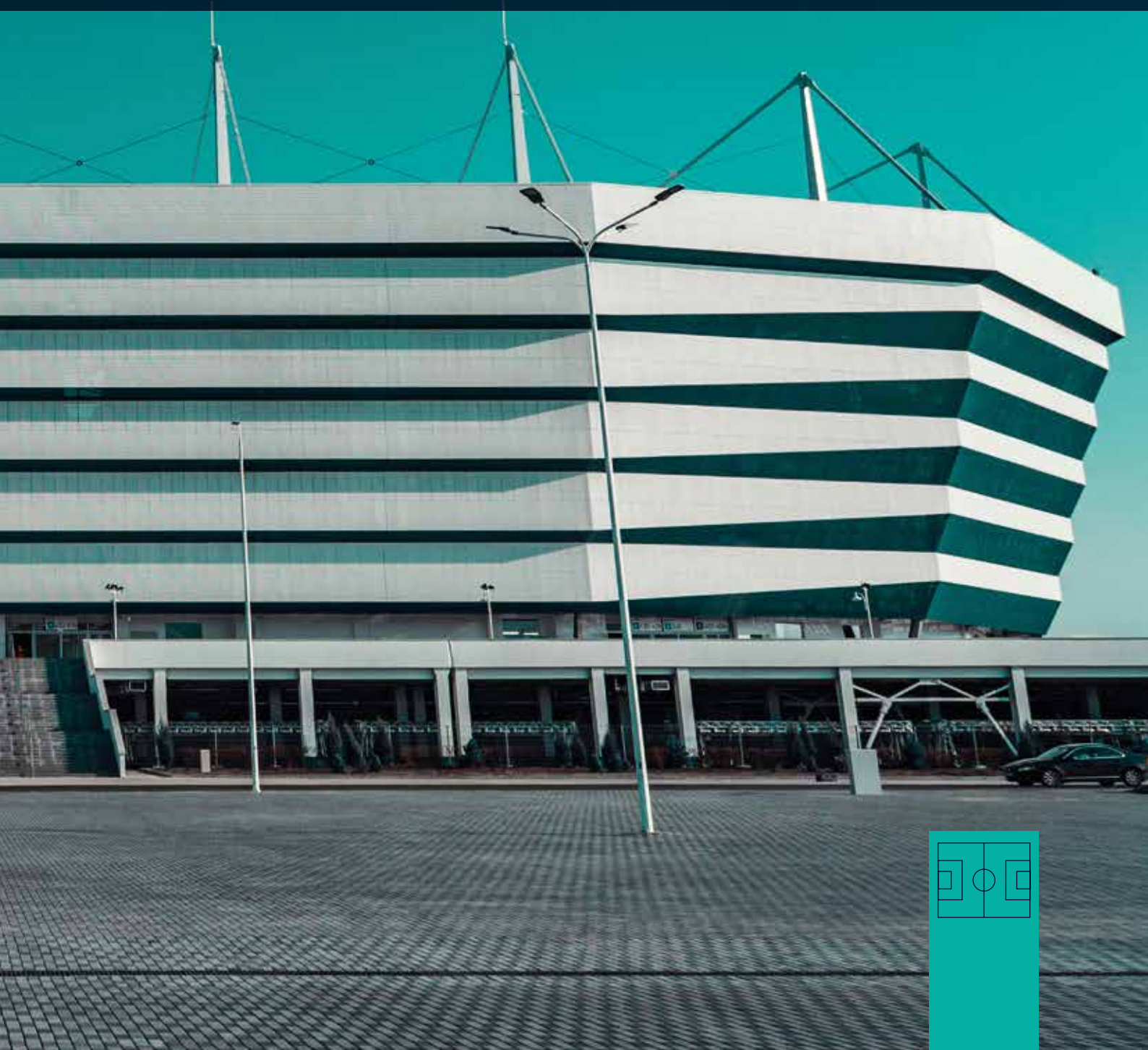


Professional lighting solutions for SPORTS facilities





PRILUX

Prilux is a company with more than 35 years in the lighting sector.

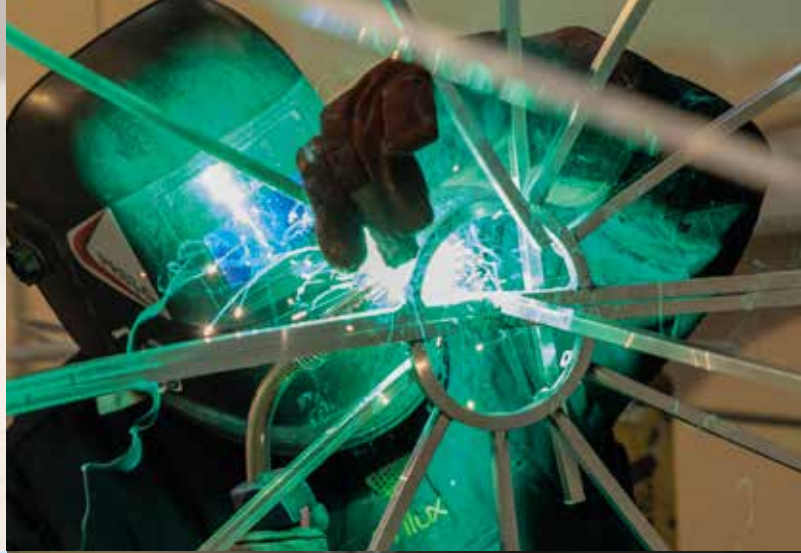
Focused on R+D+I, we design and manufacture light fixtures and technology.

We light spaces.
Our technological solutions and products are reliable and innovative, adapting to the needs of the client.

We offer control systems. Our patented technology manages the consumption optimally and sustainably, reducing costs.

We are more than a manufacturer; Prilux is your partner in lighting, working with you in all phases of the project, from design to installation.

Our values: "customisation, flexibility, efficiency and sustainability".



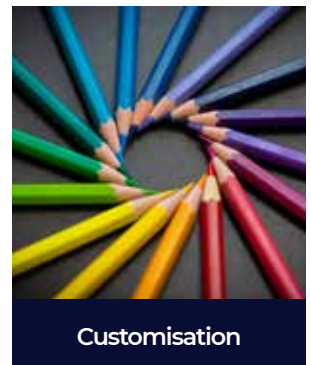
Flexibility



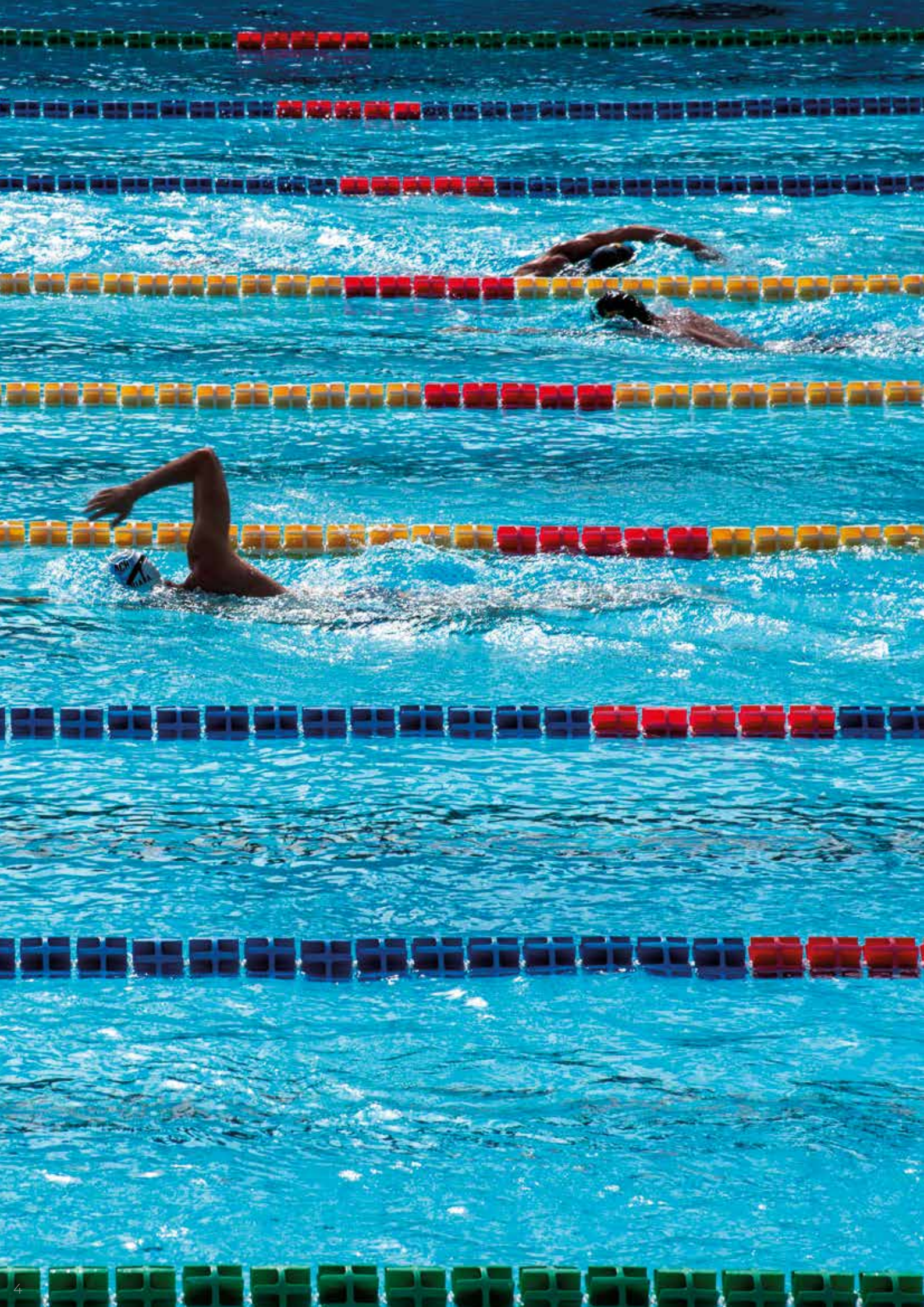
Efficiency



Sustainability



Customisation



Index

Sustainable sports facilities with high-quality lighting	6
Sports lighting	8
What does good lighting provide?	10
360° Solutions	12
CORA SPORTS	15
CORA SPORTS control system	16
CORA SPORTS benefits	18
Lighting suited to each use	20
Cora Sports / Cora Stadium	22
Cora Master	24
Floodlights for sports lighting solutions	27
Hexagon Play	28
Nantes Play	40
Sports lighting projects	43
Football fields lighting	44
Tennis courts lighting	54
Paddle courts lighting	60
Sports halls lighting	66
Indoor pools lighting	72

Sustainable sports facilities with high-quality lighting

Sport is an essential activity that improves physical and mental health. Proper lighting makes it safer, more comfortable, and more profitable.

Our sports lighting solutions have been adapted to technological advances and demanding users, making spaces more flexible and infrastructures more sustainable.

Prilux lights properly the spaces, adapting to the different locations, schedules, multi-activities, seasons, and any other conditioning factor.

Lighting that offers comfort to athletes and sports broadcasts.



**Social
development**



**Physical and mental
development**



**Leisure and
entertainment**



"El Barxell" Football local field
Petrer (Alicante, Spain)

Sports lighting

Today's solutions for future needs

CORA SPORTS, the control system developed by Prilux, provides smart management of lighting in sports facilities

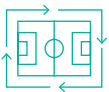
CORA SPORTS combines LED technology in lighting with a control system, flexible and profitable. Energy consumption costs are reduced by 70%, and also maintenance costs and CO2 emissions.

Lighting solutions, ideal for sports pavilions, swimming pools, running tracks, tennis courts, paddle tennis, football fields, rugby, hockey, golf, as well as professional sports stadiums and race tracks.

A control system that extends to the interior and exterior of adjacent spaces, changing rooms, common areas, cafeteria, access areas and car parks.



“San Pedro” Leisure center
San Pedro del Pinatar (Murcia, Spain)



Optimised installations

- Energy-sustainable lighting system with a consumption reduction of up to 70%
- Long-lasting state-of-the-art LED technology.
- LED technology with lower CO2 emissions.
- Reduced light pollution, wide variety of optics provide light when and where it's needed,
- Light fixtures with remote equipment boxes, lower operating costs by avoiding the need for platform lifts.



Flexible installations

- Easy remote lighting control with CORA SPORTS and its wireless Bluetooth 5.0 technology.
- The installation is easy to configure and manage with the intuitive PLAY MESH SPORT app.
- Lighting that can be adapted to the needs of different sports, schedules and calendars.
- Different programmable lighting arrangements for maintenance tasks, training days and competition days.
- Zoning of the installation, lights can be dimmed or turned off by areas.



Personalised experiences

- High quality, uniform lighting on the playing field, avoiding waste, glare and shadows.
- Optimal viewing for players and spectators from any point of the installation.
- Instant-on and instant-restarting in the event of a power failure.
- Special light fixtures for top-quality, flicker-free live TV broadcasting.
- Possibility of special effects, with dynamic lighting that creates interaction with spectators and unforgettable experiences.

What does good lighting provide?

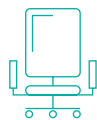
Proper lighting benefits all activities, with tangible results for everyone involved in the creation and use of the facility: unforgettable experiences for players and spectators, and added benefits for installers, maintenance personnel, etc.



Users/

Enjoy your sports experience

- Optimal lighting conditions, brings out the full potential of players and improves their experience during the game.
- Facilities adapted to the needs and schedules of users.



Sports clubs

Maximise the performance of your installations.

- Cost-effective, safe and comfortable sports facilities that allow different non-sporting uses. Helps attract new business opportunities and partners.



Installers and maintenance

Control has never been so easy

- Real-time monitoring favours maintenance work, and easily adapts the lighting to any sport, activity, schedules and calendars reducing operational costs.
- It allows future expansions of the sports facility without replacing or changing the control system.



Engineering

Quality and reliability in a single solution

- Advice and technical support that helps resolve any needs that arise before, during and after installation.



Public administration

Sustainable solutions for smart cities

- Efficient and sustainable sports facilities; adapted to current and future European and international regulations to reduce the carbon footprint.
- Quality lighting, improving the safety and well-being of the sports community.



Sports hall
San Pedro del Pinatar (Murcia, Spain)

360° Solutions

We work with you from start to finish



We guarantee the success of our projects by working closely with our clients to provide a customised, efficient and sustainable solution.

We carry out an exhaustive preliminary lighting study that takes into account the technical characteristics and requirements of the facility, its activities and the economic needs of the owners.

We then offer a comprehensive audit and technical consulting service prior to the development of the engineering design. This ensures optimal lighting results in terms of lighting levels, glare, uniformity in the vertical and horizontal planes, among other things.



"UMA" Swimming pool
Murcia, Spain



CORA SPORTS



Control system CORA SPORTS

CORA SPORTS, a device developed by Prilux to control DALI light fixtures in new or existing installations, indoors or outdoors, using Bluetooth 5.0 wireless technology.

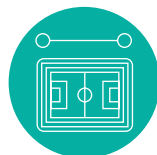
Technology that is more efficient and easier to deploy and scale for professional lighting applications. It can work in a meshed arrangement with the light fixtures and to create smart communication networks.

Especially recommended in installations with towers and/or groups of light fixtures to make it possible to operate them as a group or individually.

The PLAYMESH SPORTS application is used to start, configure and control the lighting. A simple, intuitive interface to remotely manage any light fixture in the installation, controlling electrical installations from mobile devices to:



Cora Stadium

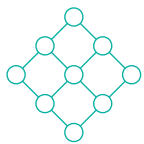


Cora Master



CORA SPORTS

Benefits



Networks and groups of luminaires

Create networks and groups of light fixtures quickly to solve specific or temporary needs



ON / OFF

Control on/off and intensity individually or as a group



Default scenes

Activate the pre-set lighting arrangements (0, 25, 50, 75 and 100%) using the app or a button connected to a potential-free input



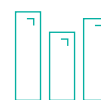
Dynamic effects

Activate dynamic effects, such as Goal and Flash modes.



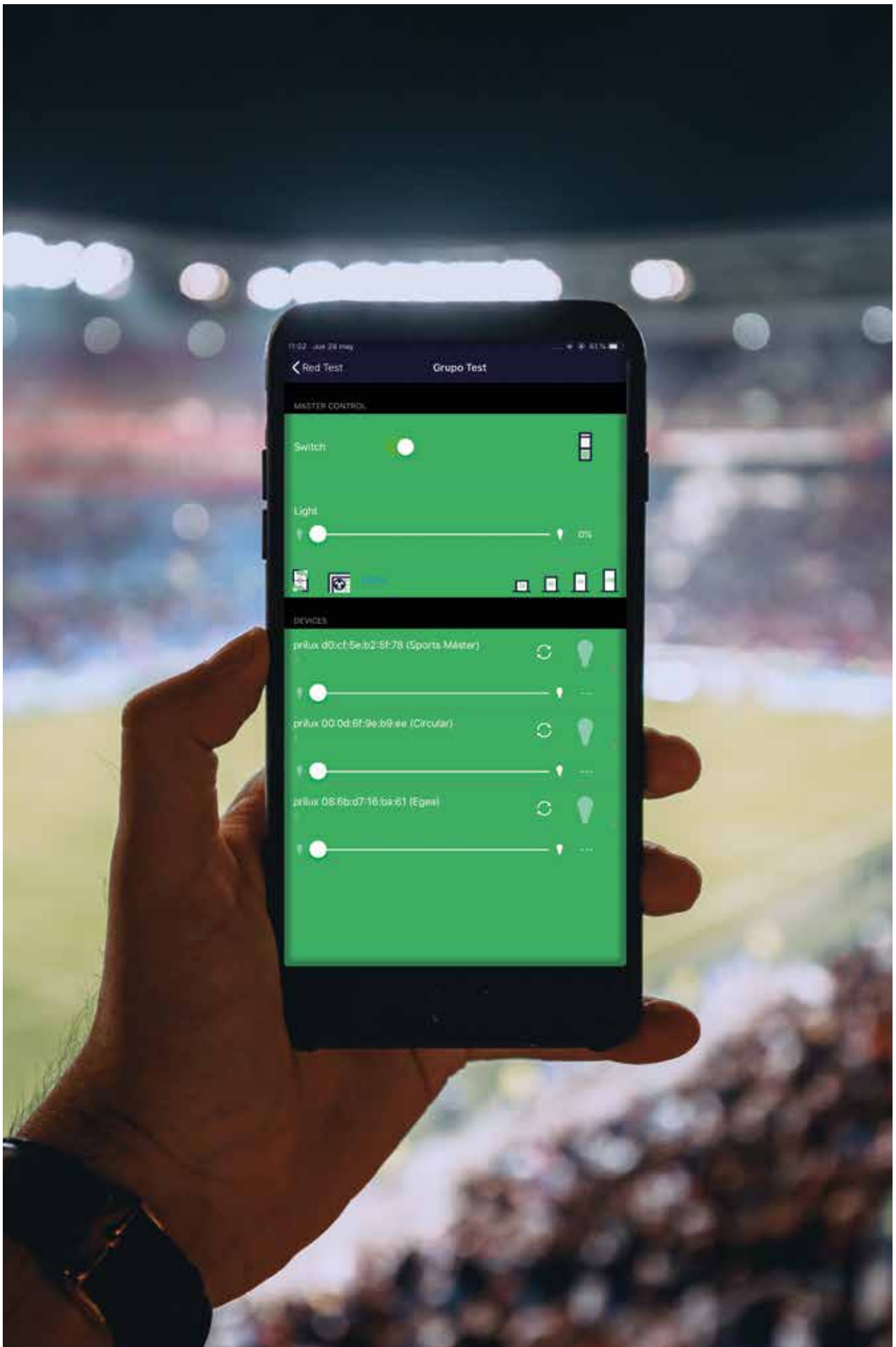
Activity Settings

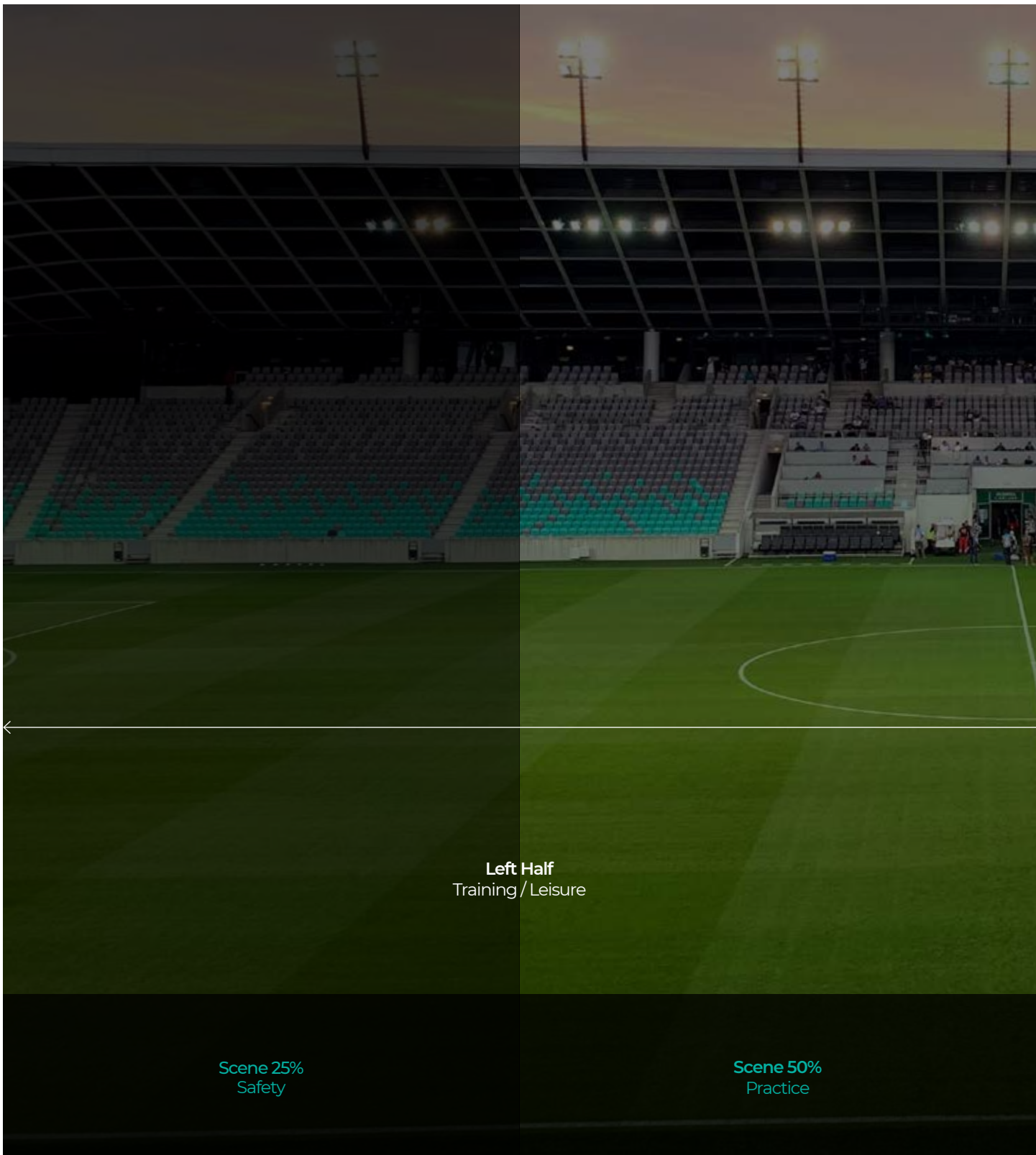
Configure activities based on the time and day of the week



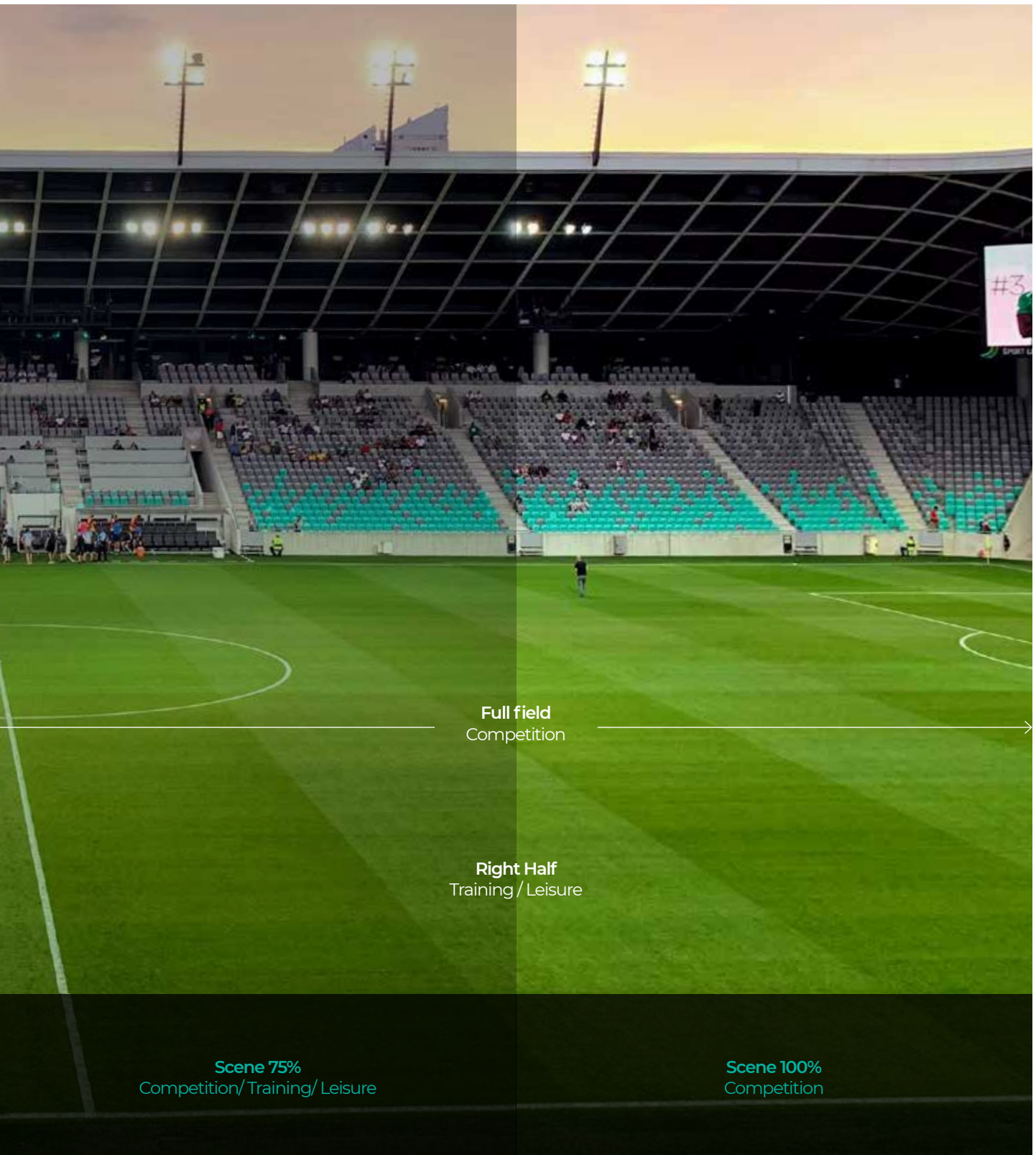
Consumption optimization

Optimise electricity consumption with brightness sensors





Lighting control for each use
o application



Full field
Competition

Right Half
Training / Leisure

Scene 75%
Competition/Training/Leisure

Scene 100%
Competition



Requires iOS 10.0 or later. Compatible with iPhone, iPad and iPod touch.





Cora Stadium



Long distances



Range up to 200 metres

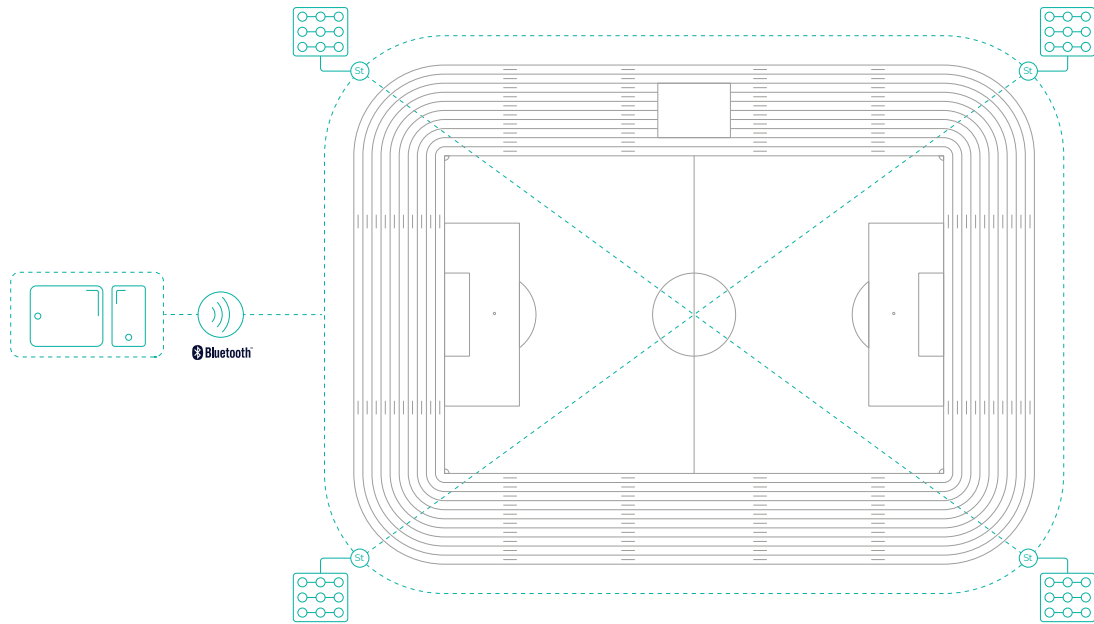


Controls up to 64 drivers



Cora Stadium / Football stadium lighting

Example of a football stadium lit with floodlights distributed on four light towers located in the corners.





Cora Master

Total flexibility for any installation

The CORA SPORTS MASTER wireless device controls groups of light fixtures that are connected to a CORA STADIUM device, with a simple button and without additional wiring. The device allows to control lighting by sectors, adapting it to the activity at any given time. For more flexibility, management tasks can be carried out using the PLAYMESH application.



Control solution



Range up to
200 metres



Controls up to 30
CORA SPORTS/STADIUM

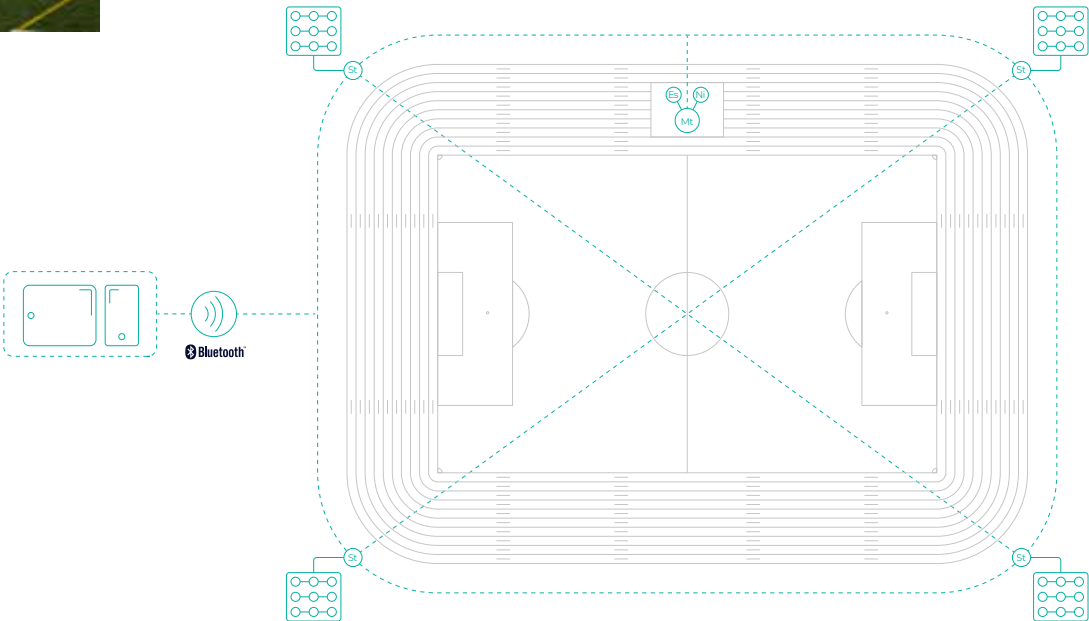


"El Barxell" Football local field
Petrer (Alicante, Spain)



Football stadium lighting

Example of a football stadium lit with floodlights distributed on four light towers located in the corners.





Floodlights for sports lighting solutions



Hexagon Play



HEXAGON PLAY, next-generation modular floodlights for large indoor and outdoor spaces with high technical requirements.

Flexible light fixture with optical groups that can be combined. Up to 5 modules.

Compact, robust design with a high degree of watertightness. Extremely resistant to impacts, strong winds and vibrations.

DALI DALI control as standard,, except for Hexagon ESSENTIAL.

Compatible with CORA SPORTS control systems and CORA remote control systems, which reduce energy consumption by up to 70%.



Certifications



Technologies



Surge protector, three protection spheres.



Operating temperature control: by NTC above 70W (85°C) or internal thermal control in drivers (depending on model).

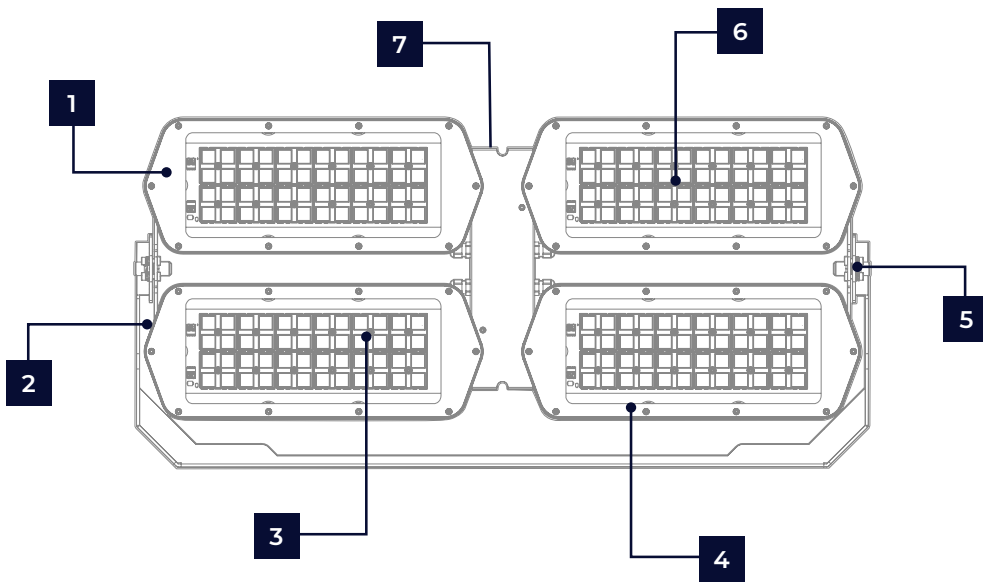


High Cooled Box, in the equipment boxes, providing optimal thermal operating conditions.



Temperature Evacuation Skin System, a mechanical micro-compacting of the surface of the material to increase heat dissipation.

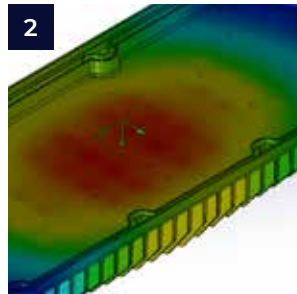
* Depending on model (download data sheet next page)



Available



1 Die-cast aluminium body. Improved alloy with high corrosion resistance.



2 Optimised heat sink. Operation up to 50°. Wide variety of optics.



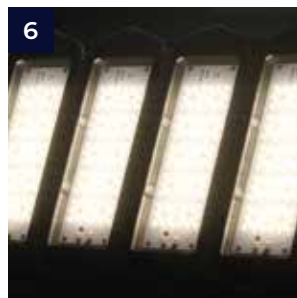
3 Wide variety of optics, reducing the number of floodlights and installation costs.



4 Enclosure: Polycarbonate diffuser with UV treatment.



5 Installation: Adjustable.



6 Glare level controlled. High uniformity.

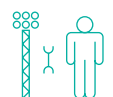
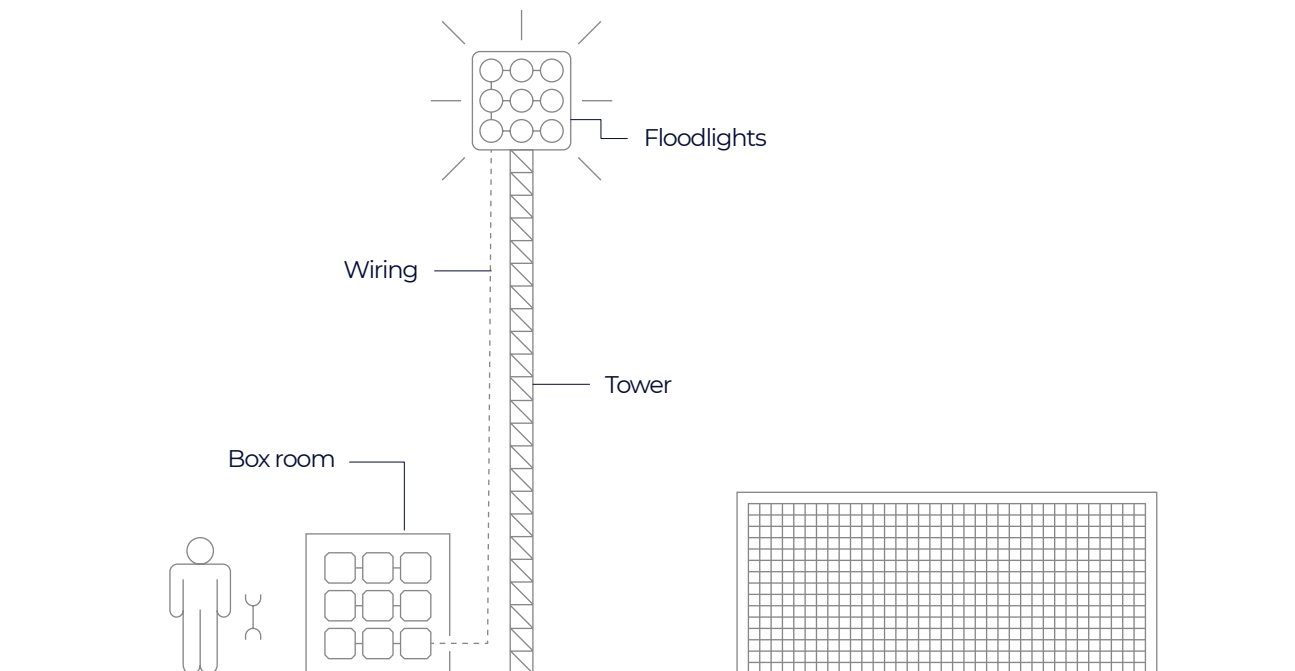


7 Integrated Box or Remote Box.

Hexagon Play

REMOTE BOX

Floodlights equipped with remote boxes allow installation up to 80m away, allowing floodlights to be installed at great heights, on towers, eaves, roofs and structures, while grouping the boxes in spaces on levels that are more easily accessible to installers or maintenance staff.



Simple maintenance

Installations equipped with remote boxes located in more accessible areas for quicker and easier maintenance.



Safe installations

The remote installation of boxes is safer for operators because it avoids maintenance work at great heights and makes towers lighter.



Economic savings and efficiency

Lower costs, auxiliary equipment like telescoping cranes or platform are not required in the event of an incident.



Hexagon Play Essential

1X with integrated box



Compact floodlight, high light output and power up to 192W. Installations with basic lighting requirements. (e.g. Recreational sports courts).

Hexagon Play Óptima

48LEDs 144W/1x, 2x, 3x, 4x, 5x with integrated box



Floodlight up to 720W. Installations with lighting solutions that require asymmetry and special optics. (e.g. Sports areas with lighting installed at lower than standard heights).

Hexagon Play Was

1X, 2X, 2X with integrated box



Floodlight with dynamic colour temperature changing. To create atmospheres, influencing moods-sensations and improving user well-being. (e.g. Sports hall).

Hexagon Play Match Unity

144LEDs/ 2X with integrated box



Floodlight up to 500W. Small sports areas that require a lot of lighting, where the light source and the electronic equipment must be kept together. (e.g. Tennis courts, paddle tennis courts).

Essential	Óptima		Was		Match Unity
1X	1X 2X 3X 4X 5X		1X 2X		2X
INTEGRATED DRIVER	INTEGRATED BOX		INTEGRATED BOX		INTEGRATED BOX
PC S-055	PMMA A-EX	PMMA A-IN	PMMA S-033	PMMA A-IN	PC S-060
PC S-025	PMMA P-IN	PMMA P-EX	PMMA P-IN	PMMA A-EX	PC S-020
PC S-090	PMMA S-014	PMMA S-033	PMMA P-EX	PMMA S-014	PC S-030
S/LENTE	PMMA S-069	PMMA S-138	PMMA S-069	PMMA S-138	PC S-090
-	PMMA S-150	-	PMMAS-150	-	-
Ra ≥7/ 4.000K	Ra ≥70 / 4.000K	RED I≤700mA (620-625mm)	Ra≥70 / 4.000K		Ra ≥70 / 4.000K
Ra≥70 / 3.000K	Ra≥70 / 3.000K	GREEN I≤700mA (520-535mm)	PCA		Ra≥70 / 5.000K
Ra≥70 / 5.000K	Ra≥70 / 5.000K	BLUE I≤700mA (465-480mm)	-		Ra≥70 / 3.000K
-	-	-	-		Ra≥80 / 3000K

Hexagon Play Match

144 LEDS/ 2X, 3X, 4X with remote box



Robust, heavy-duty floodlight with maximum performance. Sports areas with very demanding lighting requirements or large areas. (e.g. class I and class II football fields, class I sports centres, large open spaces).

Hexagon Play Arena

2X, 3X, 4X with remote box



High-performance floodlight designed for TV broadcasting, with light flows for large professional competitions and true-to-life colour reproduction.

Hexagon Play RGBW

1X, 2X with integrated box



Colour projection both indoors and outdoors. Designed to light by flooding the desired space or surface, but with special optics that allow graze lighting over long distances. (e.g.: Sports areas).

Hexagon Play RGBW Remote

1X, 2X with remote box



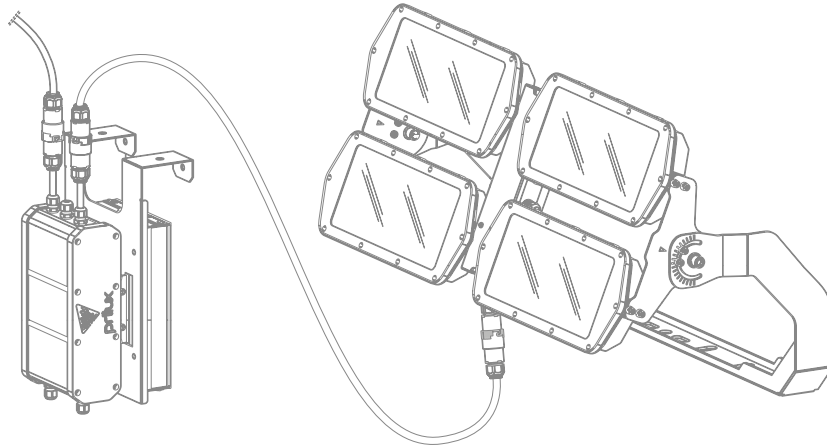
Minimalist colour projection, allowing the electronics to be separated from the module to facilitate maintenance. (e.g.: Small sports facilities).

Match	Arena 4K	RGBW	
2X 3X 4X	2X 3X 4X	1X 2X 1X 2X	
REMOTE BOX	REMOTE BOX	INTEGRATED BOX	REMOTE BOX
PC S-060	PC S-026	PMMA P-EX	PMMA S-033
PC S-030	PC S-066	PMMA A-IN	PMMA S-069
PC S-020	PC S-037	PMMA A-EX	PMMA S-138
PC S-090	PC S-090	PMMA P-IN	PMMA S-150
-	-	PMMA S-014	-
Ra ≥70 / 4.000K	Ra≥90 / 6.000K	RGBW (White 4000K Ra> 80)	
Ra ≥70 / 5.000K	-	-	-
Ra≥70 / 3.000K	-	-	-
Ra≥80 / 3000K	-	-	-

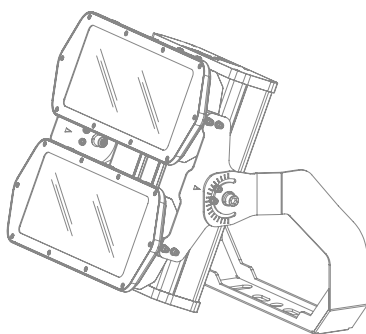
Hexagon Play

COMPONENTS

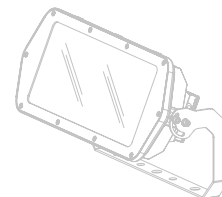
Equipment



Remote Box



Integrated Box

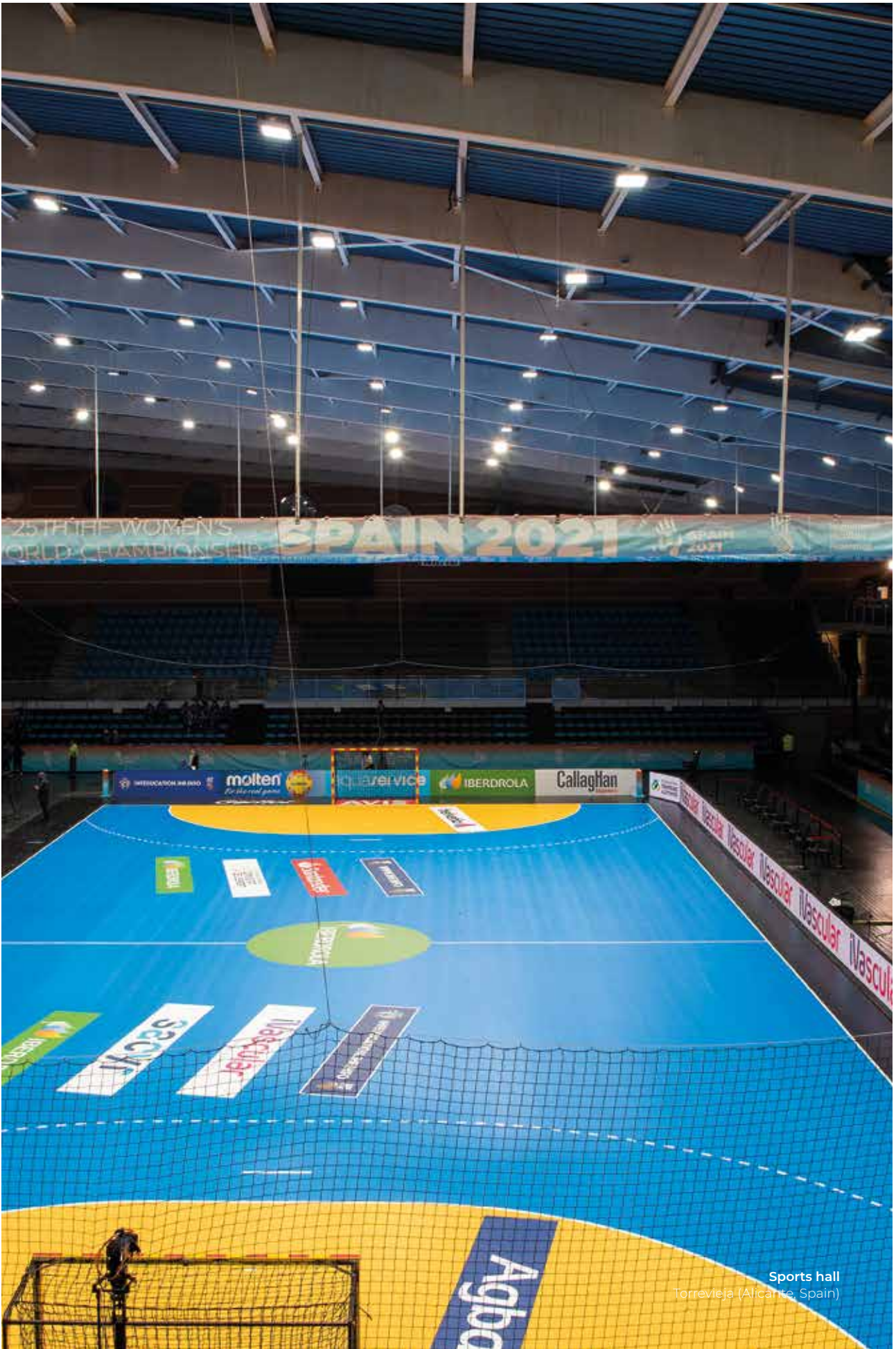


Integrated Driver

Optical

PMMA P-IN	Polymethylmethacrylate Intensive Corridor
PMMA P-EX	Polymethylmethacrylate Extensive Corridor
PMMA A-IN	Polymethylmethacrylate Asymmetric Intensive
PMMA A-EX	Polymethylmethacrylate Asymmetric Extensive
PMMA S-014	Polymethylmethacrylate Superintensive Symmetric 14°
PMMA S-033	Polymethylmethacrylate Symmetric Intensive 33°
PMMA S-069	Polymethylmethacrylate Average Symmetrical 69°
PMMA S-090	Polymethylmethacrylate Symmetric 90°
PMMA S-138	Polymethylmethacrylate Extensive Symmetric 138°
PMMA S-150	Polymethylmethacrylate Superextensive Symmetric 150°

PC S-020	Polycarbonate Symmetric Intensive 20°
PC S-025	Polycarbonate Symmetric Intensive 25°
PC S-026	Polycarbonate Symmetric Intensive 26°
PC S-030	Polycarbonate Symmetric Intensive 30°
PC S-037	Polycarbonate Symmetric Intensive 37°
PC S-060	Polycarbonate Symmetric Average 60°
PC S-066	Polycarbonate Symmetric Average 66°
PC S-090	Polycarbonate Symmetric 90°



Sports hall
Torrevieja (Alicante, Spain)

Hexagon Play Arena



We design solutions for the most demanding sports competitions and for large stadiums for professional sports.

Artificial lighting has a direct impact on the quality of the TV picture and thus on visual perception. Sporting events must take into account not only the essential lighting requirements demanded by the sporting activities standards, but must also comply with the specific visual conditions for television broadcasting, if required.

The lighting of the stadiums must allow the broadcast of events with a high level of digital quality. HEXAGON ARENA is the perfect luminaire to comply with the television broadcasting standards and regulations required by sports federations. It provides optimal lighting for 4K broadcasting as it maximizes the image results. With a TLCI >94 (Television Lighting Consistency Index), it ensures true-to-life colour reproduction.



Certifications



* 1.000W Model



Hexagon Play RGBW



Sports facilities are becoming more and more flexible offering alternative uses, such as concerts and events. We have developed lighting solutions to offer unforgettable experiences not only during high-level sporting competitions, but also by creating different pre-match shows, half-time shows, etc., and even for large-scale non-sporting shows and events.

Thanks to its DALI or DMX options, the concept of dynamic lighting is maximised. HEXAGON RGBW can project both static and dynamic instant-response programmed colour scenes and can synchronise the settings with sound.

HEXAGON RGBW offers a variety of control possibilities using standard protocols such as Bluetooth or DMX.





Technologies



Bluetooth: Allows communication of luminaires with the DALI control system via any bluetooth device and a free APP The application is used to control the regulation of the luminous flux, , colour, scene configuration, behaviour linked to schedules, etc. A network can be created with different equipment and accessories to unify the control of one or more spaces, making it possible to create customised groups, scenes and dynamic sequences. The Bluetooth device is a box connected to the Hexagon, one per each module.

DMX solution: It is composed of a 4.3" controller and touch panel that allows the RGBW installation to be controlled via DMX. It allows the installation to create different dynamic instant-response scenes with light and sound effects in installations where audiovisual or interactive shows are projected, creating unique, different and original settings. The installation can be controlled or by using a button panel/touch screen, or remotely with a mobile device connected to the same network (via cable, Wi Fi or internet) (if available).

Nantes Play



The NANTES PLAY family of floodlights is suitable for lighting projects that require power and photometries that guarantee uniformity and high levels in the installation. Ideal for small and medium-sized class I, II and III sports fields, as well as indoor and outdoor multi-sports areas.

The Nantes has a compact, minimalist design and is designed to dissipate heat, extending the life of its components and facilitating water removal, self-cleaning and preventing rusting.

They are DALI floodlights compatible with CORA SPORTS that offer multiple combinations of sports lighting solutions.

Nantes Play



Nantes L Play



Nantes XL Play



Technologies

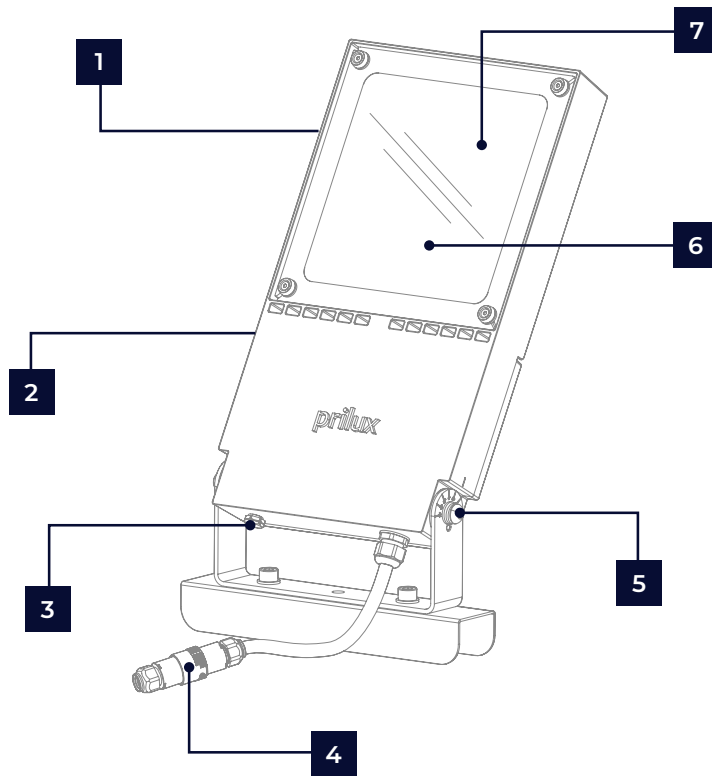


Surge protector, three protection spheres.



Operating temperature control: by NTC from 70W (85°C) or internal thermal control in drivers (depending on model).

* Depending on the model (download technical data from QR above)



Design:
Compact and minimalist,
made of high-pressure die-
cast aluminium.



Connectivity:
NEMA 7



ZHAGA BOOK 18



Depressor valve:
Prevents condensation on
electronic components.



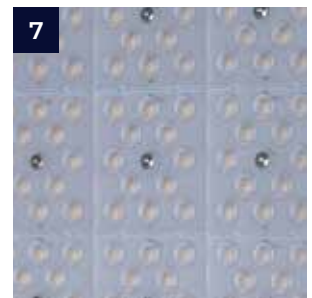
Installation:
Includes a 1m hose and an
IP68 connection block.



Orientation:
The adjustable beam
enables precise lighting
placement of +/-90°



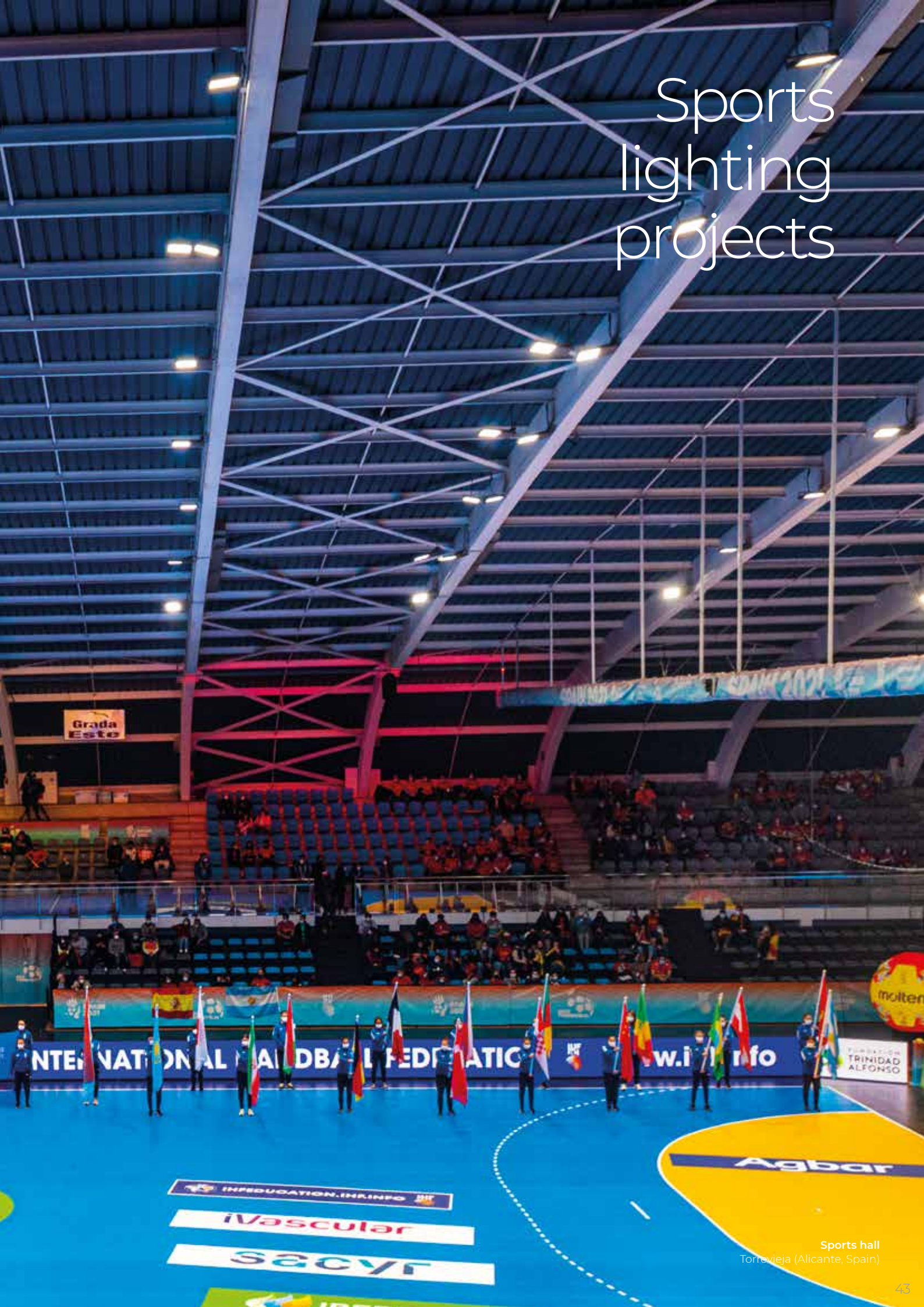
Tempered glass:
Thickness: 5 mm

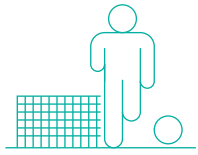


Light source:
Efficiencies of up to
168lm/W



Sports lighting projects





Football field lighting

Most of the training sessions and matches are at sunset, so it is required high-quality and effective lighting that provides perfect visibility conditions.

The lighting requirements of sports facilities must be adapted to each event, training, match (international, national, regional, local) and its television broadcast. Always keeping in mind the uniformity and the visual comfort, avoiding glare.

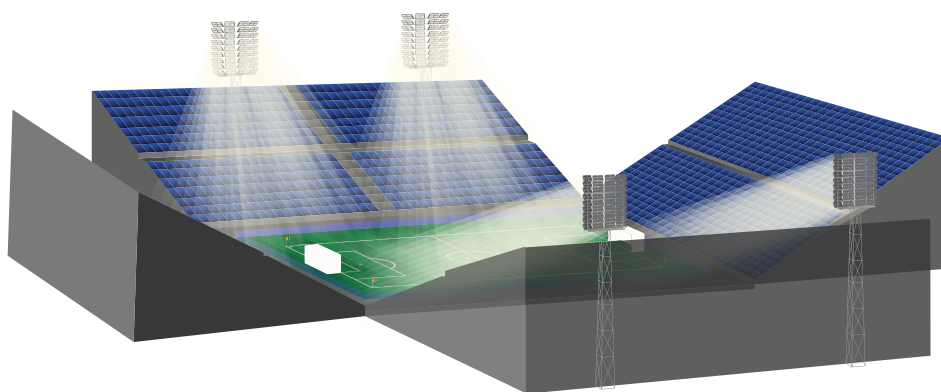


Football field-11

Television broadcasting

Lighting project of a 100x64m football field, according to UNE-EN 12193 "Standards for Sports and Recreational Facilities" (NIDE). Designed for high-level international and national competitions with television broadcasting (CLASS I).

Lighting solution : HEXAGON ARENA floodlights, achieving the average values specified as standard for this type of installation.

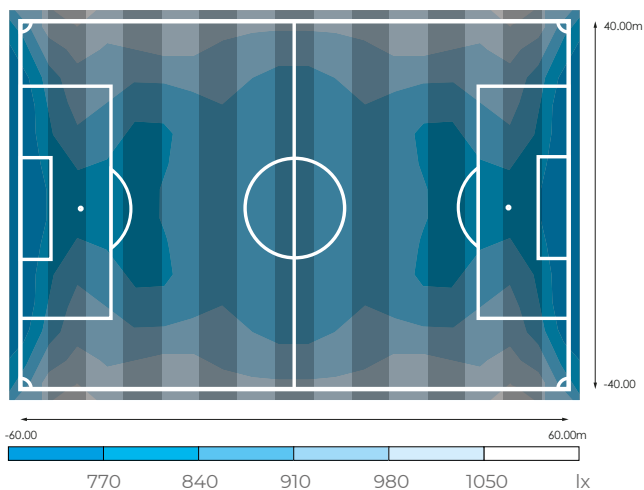


Data


Dimensions	100 x 64m
Surface Area	6.400m ²
Luminaire height	24m
Total power	214.000W
Power/m ²	33,44W/m ²
Total flux	22.774.652lm

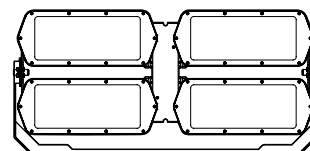
Illuminance

E_m	891lx	Uniformity $U_o (E_{min}/E_m)$	0,82
E_{min}	953lx		



Hexagon Arena

Ud		W_T	ϕ_T
4	HEXAGON ARENA 4X144LEDS 960 S-037 DMX	1.000W	121.705lm
20	HEXAGON ARENA 4X144LEDS 960 S-037 DMX	1.500W	155.753lm
84	HEXAGON ARENA 4X144LEDS 960 S-026 DMX	1.500W	158.088lm
36	HEXAGON ARENA 4X144LEDS 960 S-066 DMX	1.500W	163.705lm

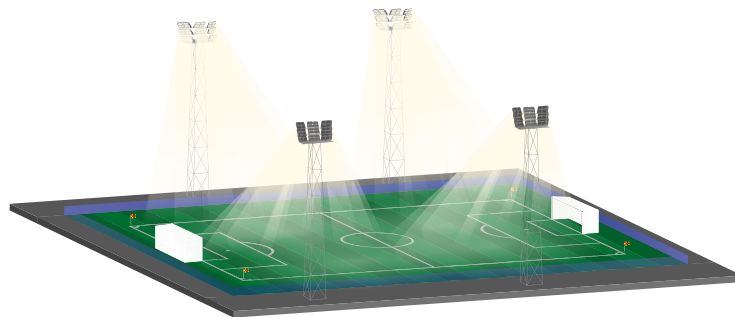


Football field-11

Class I

Lighting project of a 100x64m football field, according to UNE-EN 12193 "Standards for Sports and Recreational Facilities" (NIDE). Designed for high-level international and national competitions (CLASS I).

Lighting solution : HEXAGON MATCH 4X floodlights, achieving the average values specified as standard for this type of installation.

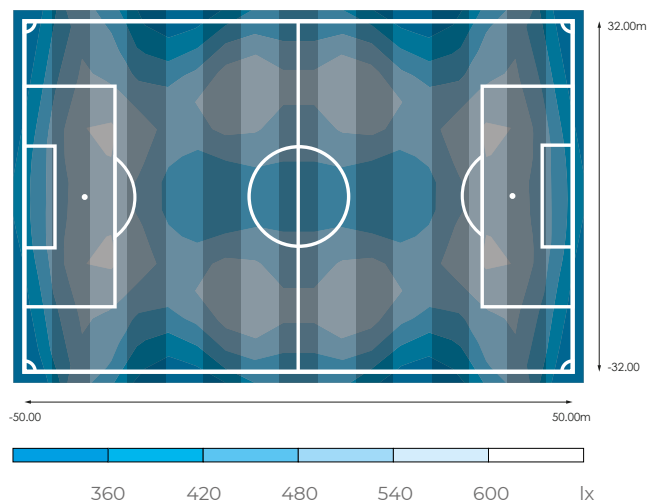


Data


Dimensions	100 x 64m
Surface Area	6.400m ²
Luminaire height	24m
Total power	55.440W
Power/m ²	8,66W/m ²
Total flux	5.987.924lm

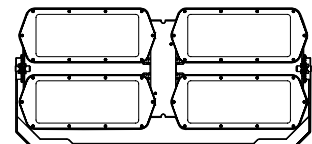
Illuminance

E_m	504lx	Uniformity $U_o (E_{min}/E_m)$	0,70
E_{min}	351lx		



Hexagon Match 4X

Ud		W_T	ϕ_T
16	HEXAGON MATCH 4X144LEDS 740 S-020 DALI	1.540W	158.399lm
20	HEXAGON MATCH 4X 740 SIM 30D	1.540W	172.677lm

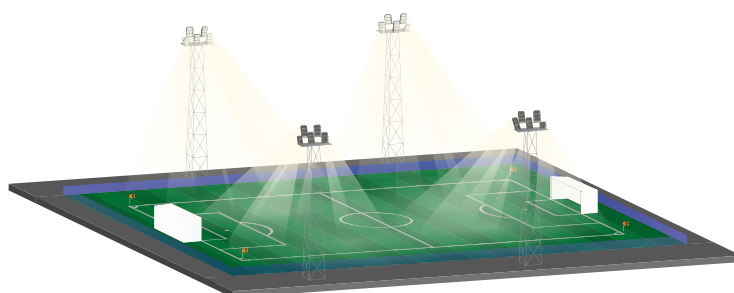


Football field-11

Class II

Lighting project of a 100x64m football field, according to UNE-EN 12193 "Standards for Sports and Recreational Facilities" (NIDE).
Designed for regional competitions and high-level training (CLASS II).

Lighting solution : HEXAGON MATCH 2X and 3X floodlights, achieving the average values specified as standard for this type of installation.

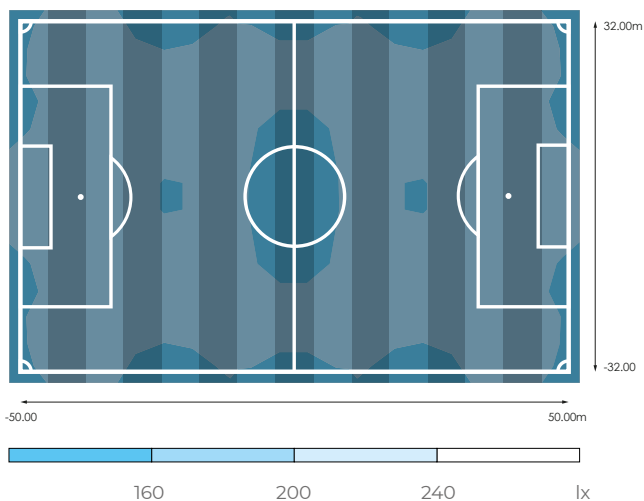


Data


Dimensions	100 x 64m
Surface Area	6.400m ²
Luminaire height	18m
Total power	18.328W
Power/m ²	2,86W/m ²
Total flux	2.271.216lm

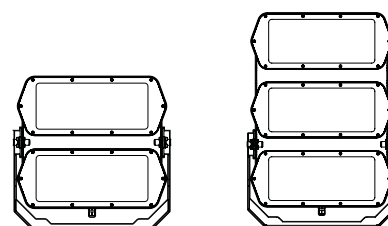
Illuminance

E_m	202lx	Uniformity $U_o (E_{min}/E_m)$	0,60
E_{min}	120lx		



Hexagon Match 2X/3X

Ud		W_T	ϕ_T
4	HEXAGON MATCH 2X 740 S-30	680W	84.418lm
4	HEXAGON MATCH 3X 740 S-30	977W	120.065lm
12	HEXAGON MATCH 3X 740 S-30	975W	121.107lm

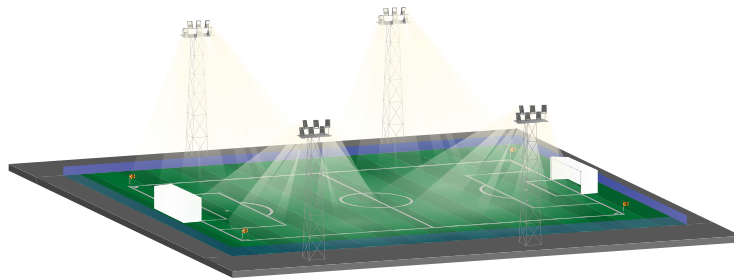


Football field-11

Class III

Lighting project of a 100x64m football field, according to UNE-EN 12193 "Standards for Sports and Recreational Facilities" (NIDE).
 Designed for regional local competitions, training and recreational use (CLASS III).

Lighting solution : NANTES XL PLAY floodlights, achieving the average values specified as standard for this type of installation.

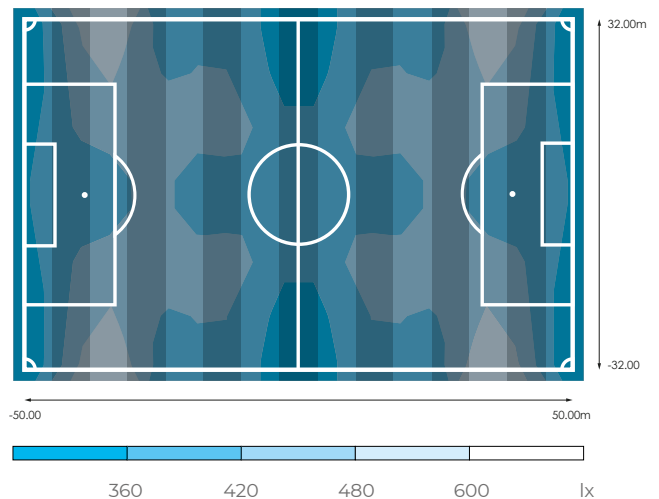


Data


Dimensions	100 x 64m
Surface Area	6.400m ²
Luminaire height	16m
Total power	7.728W
Power/m ²	1,21W/m ²
Total flux	1.018.608lm

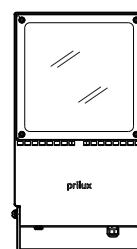
Illuminance

E_m	79lx	Uniformity $U_o (E_{min}/E_m)$	0,62
E_{min}	49lx		



Nantes XL Play

Ud		W_T	ϕ_T
12	NANTES XL 300LEDS 1000mA 740 S-25	322W	42.438lm
12	NANTES XL 300LEDS 1000mA 740 S-55	322W	42.446lm

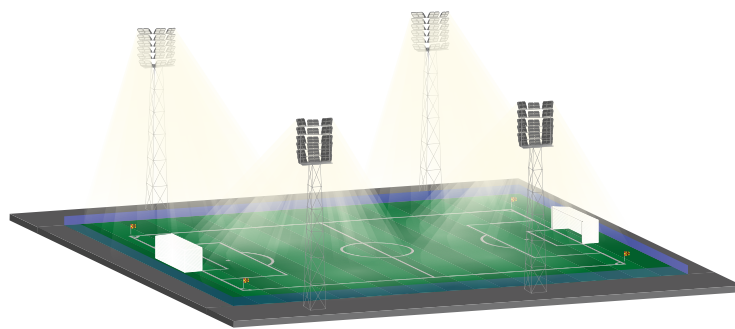


Football field-11

Level E3 (FFF)

Lighting project of a 100x64m football field, according to the French Football Federation norm (FFF). Designed for sports activities classified at Level E3.

Lighting solution : HEXAGON MATCH 4X floodlights, achieving the average values specified as standard for this type of installation.

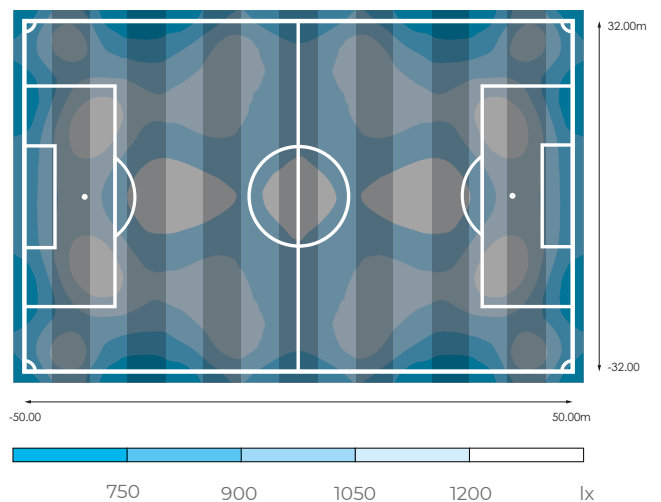


Data


Dimensions	100 x 64m
Surface Area	6.400m ²
Luminaire height	20m
Total power	110.880W
Power/m ²	17,32W/m ²
Total flux	11.918.736lm

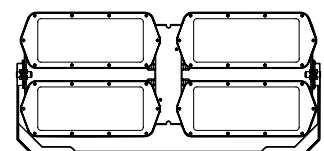
Illuminance

E_m	774lx	Uniformity $U_o (E_{min}/E_m)$	0,78
E_{min}	602lx		



Hexagon Match 4X

Ud		W_T	ϕ_T
4	HEXAGON MATCH 4X144LEDS 740 S-020 DALI	1.540W	158.399lm
4	HEXAGON MATCH 4X144LEDS 740 S-030 DALI	1.540W	172.677lm

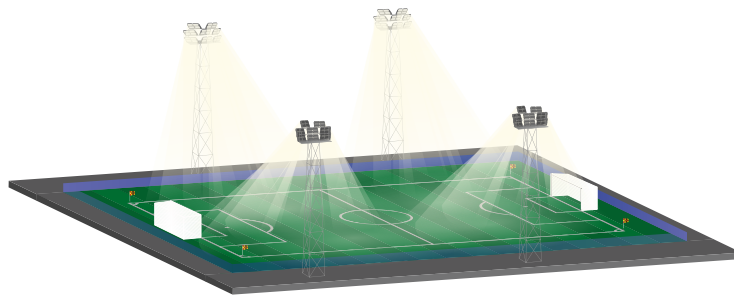


Football field-11

Level E4 (FFF)

Lighting project of a 100x64m football field, according to the French Football Federation norm (FFF). Designed for sports activities classified at Level E4.

Lighting solution : HEXAGON MATCH 4X floodlights, achieving the average values specified as standard for this type of installation.

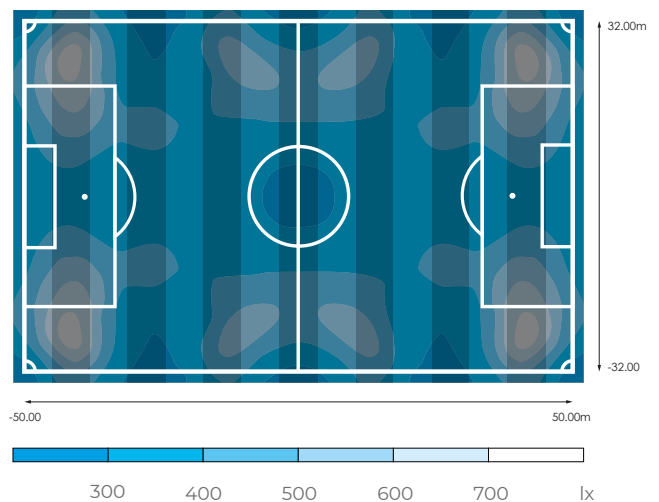


Data


Dimensions	100 x 64m
Surface Area	6.400m ²
Luminaire height	16m
Total power	49.280W
Power/m ²	7,70W/m ²
Total flux	10.594.432lm

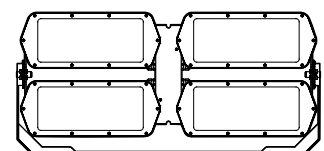
Illuminance

E_m	330lx	Uniformity U_o (E_{min}/E_m)	0,73
E_{min}	242lx		



Hexagon Match 4X

Ud		W_T	ϕ_T
24	HEXAGON MATCH 4X144LEDS 740 S-020 DALI	1.540W	158.399lm
8	HEXAGON MATCH 4X144LEDS 740 S-030 DALI	1.540W	172.677lm

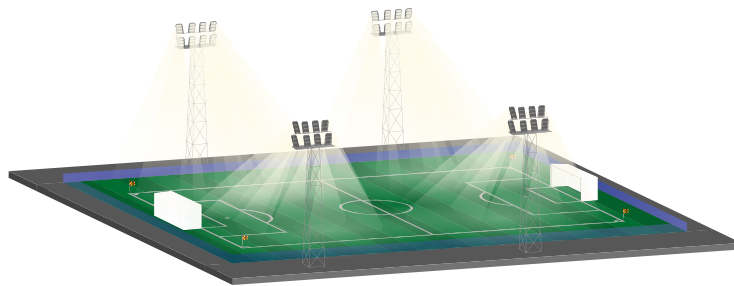


Football field-11

Level E5 (FFF)

Lighting project of a 100x64m football field, according to the French Football Federation norm (FFF). Designed for sports activities classified at Level E5.

Lighting solution : HEXAGON MATCH 3X floodlights, achieving the average values specified as standard for this type of installation.

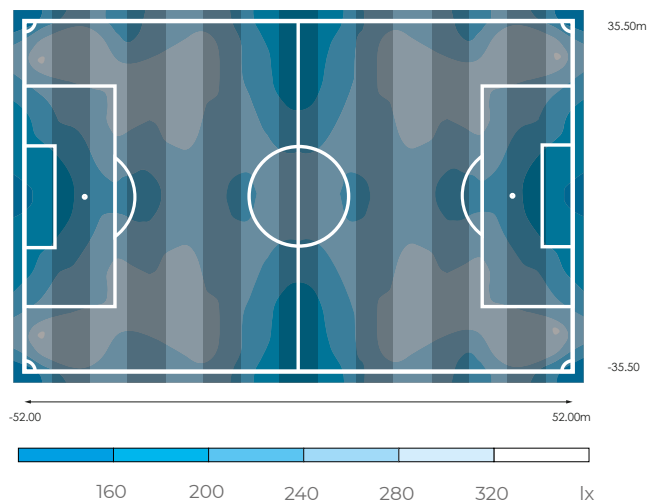


Data


Dimensions	100 x 64m
Surface Area	6.400m ²
Luminaire height	16m
Total power	31.264W
Power/m ²	4,88W/m ²
Total flux	3.847.044lm

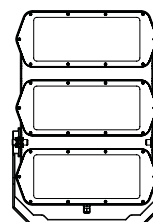
Illuminance

E_m	213lx	Uniformity U_o (E_{min}/E_m)	0,72
E_{min}	152lx		



Hexagon Match 3X

Ud		W_T	ϕ_T
20	HEXAGON MATCH 3X144LEDS 740 S-030 DALI	977W	121.107lm
12	HEXAGON MATCH 3X144LEDS 740 S-060 DALI	977W	118.742lm

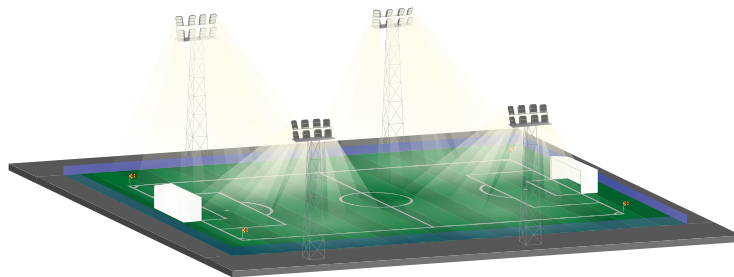


Football field-11

Level E6 (FFF)

Lighting project of a 100x64m football field, according to the French Football Federation norm (FFF). Designed for sports activities classified at Level E6

Lighting solution : HEXAGON MATCH 2X144LEDS 740 S-030 DALI, HEXAGON MATCH 2X144LEDS 740 S-030 DALI, HEXAGON MATCH 2X144LEDS 740 S-060 DALI floodlights, achieving the average values specified as standard for this type of installation.

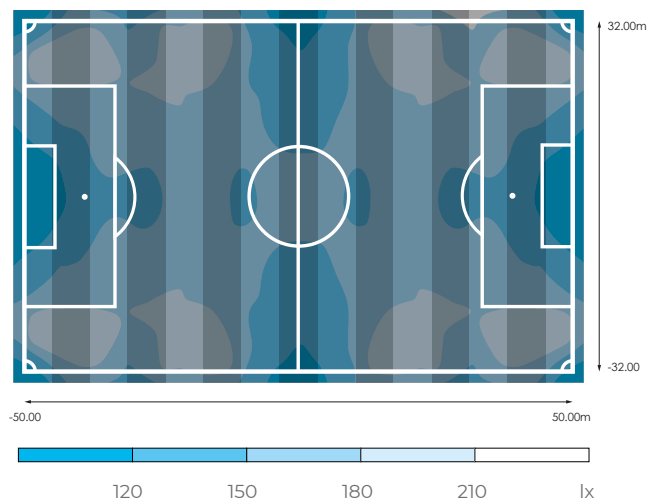


Data


Dimensions	100 x 64m
Surface Area	6.400m ²
Luminaire height	16m
Total power	19.744W
Power/m ²	3,08W/m ²
Total flux	2.465.348lm

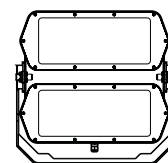
Illuminance

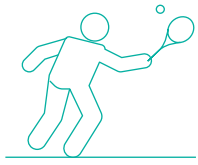
E_m	138lx	Uniformity $U_o (E_{min}/E_m)$	0,70
E_{min}	97lx		



Hexagon Match 2X

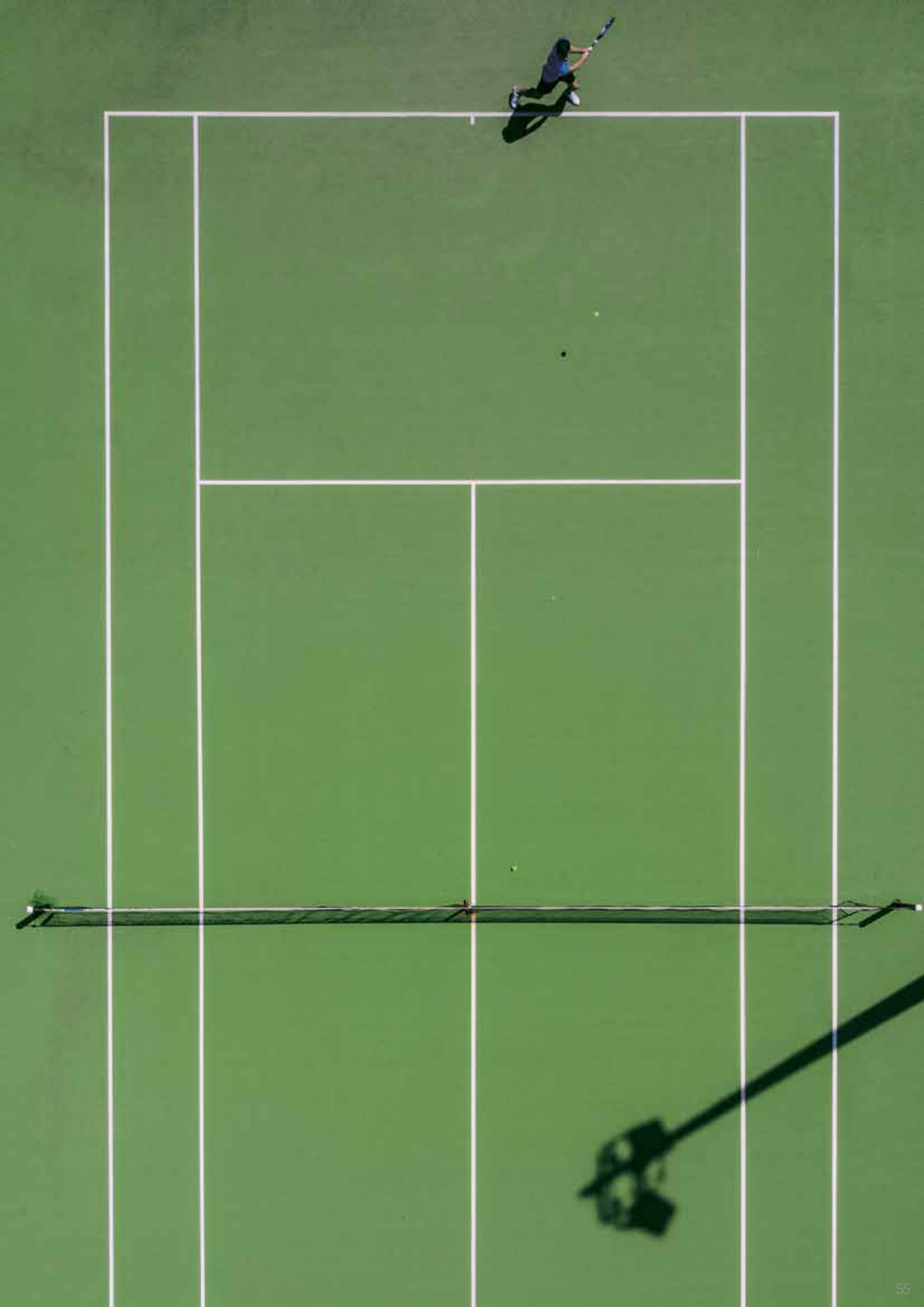
Ud		W_T	ϕ_T
16	HEXAGON MATCH 2X144LEDS 740 S-030 DALI	546W	70.918lm
4	HEXAGON MATCH 2X144LEDS 740 S-030 DALI	688W	84.418lm
12	HEXAGON MATCH 2X144LEDS 740 S-060 DALI	688W	82.749lm





Tennis court lighting

Tennis court lighting aims to ensure that the ball is visible at all times, for both players and spectators, regardless of the position and speed of the ball. For this reason, it is important to consider ideal uniformity values when designing the lighting for the installation.

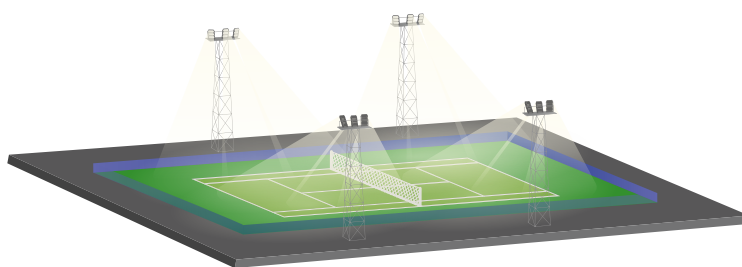


Tennis court (Outdoor)

Class I

Lighting project of a 36x18m tennis court, according to UNE-EN 12193 "Standards for Sports and Recreational Facilities" (NIDE). Designed for high-level international and national competitions (CLASS I).

Lighting solution : HEXAGON MATCH 3X floodlights, achieving the average values specified as standard for this type of installation.

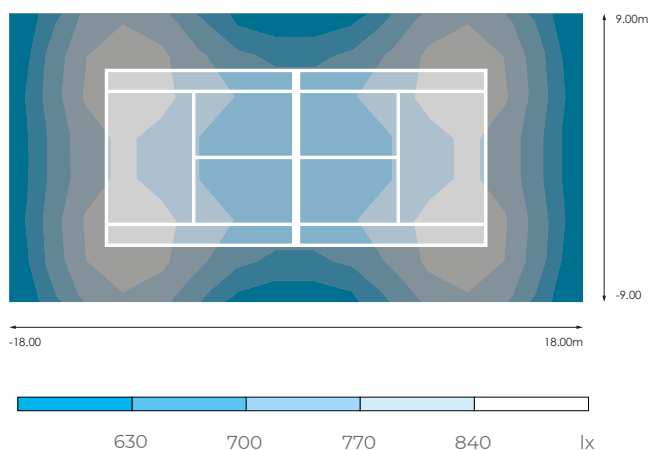


Data

Dimensions	36 x 18m
Surface Area	648m ²
Luminaire height	10m
Total power	11.724W
Power/m ²	18,09W/m ²
Total flux	1.424.904lm

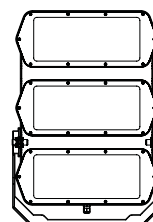
Illuminance

E_m	770lx	Uniformity $U_o (E_{min}/E_m)$	0,78
E_{min}	600lx		



Hexagon Match 3X

Ud		W_T	ϕ_T
12	HEXAGON MATCH 3X 740 S-60 DALI	977W	118.742lm

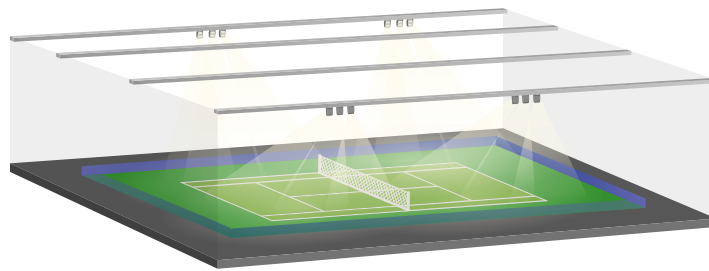


Tennis court (Indoor)

Class II

Lighting project of a 36x18m tennis court, according to UNE-EN 12193 "Standards for Sports and Recreational Facilities" (NIDE). Designed for regional competitions and high-level training (CLASS II).

Lighting solution : HEXAGON MATCH 2X floodlights, achieving the average values specified as standard for this type of installation.

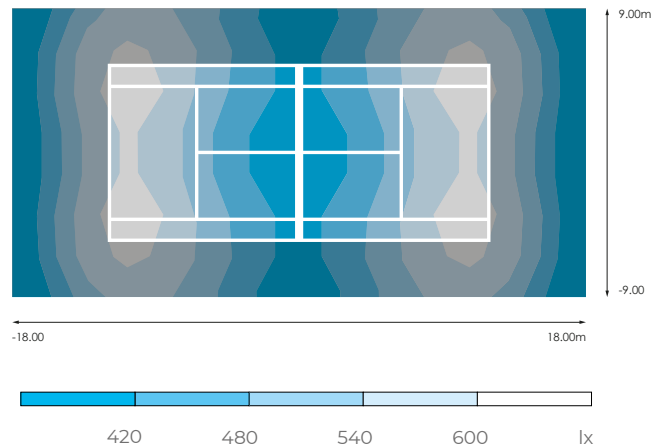


Data

Dimensions	36 x 18m
Surface Area	648m ²
Luminaire height	10m
Total power	6.552W
Power/m ²	10,11W/m ²
Total flux	835.080lm

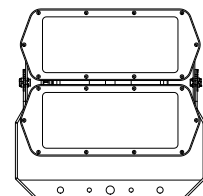
Illuminance

E_m	505lx	Uniformity U_o (E_{min}/E_m)	0,74
E_{min}	376lx		



Hexagon Match 2X

Ud		W_T	ϕ_T
12	HEXAGON MATCH 2X144LEDS 740 S-060 DALI	546W	69.590lm

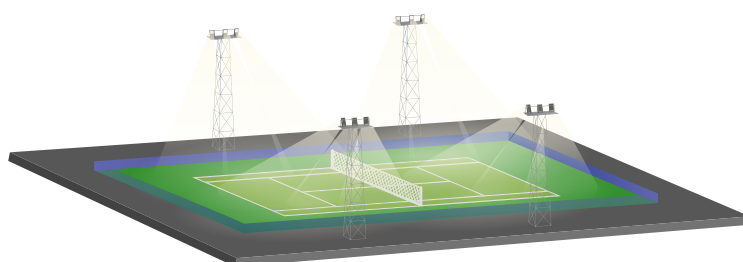


Tennis court (Outdoor)

Class III

Lighting project of a 36x18m tennis court, according to UNE-EN 12193 "Standards for Sports and Recreational Facilities" (NIDE). Designed for local competitions, training and recreational use (CLASS III).

Lighting solution : NANTES XL PLAY floodlights, achieving the average values specified as standard for this type of installation.

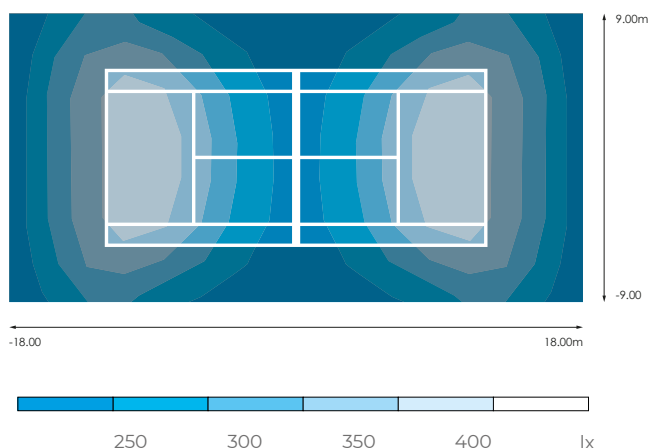


Data


Dimensions	36 x 18m
Surface Area	648m ²
Luminaire height	10m
Total power	3.864W
Power/m ²	5,96W/m ²
Total flux	509.352lm

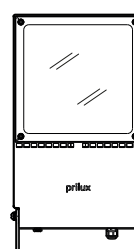
Illuminance

E_m	320lx	Uniformity U_o (E_{min}/E_m)	0,67
E_{min}	214lx		



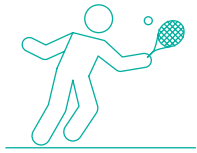
Nantes XL Play

Ud		W_T	ϕ_T
4	NANTES XL PLAY 300LEDS 1000mA 740 S-90	322W	42.446lm
8	NANTES XL PLAY 300LEDS 1000mA 740 S-55	322W	42.446lm





"Santa Ana" Sports complex
Hellín (Albacete, Spain)



Paddle court lighting

Because of the dynamic movement and high speed of the ball in this sport, lighting is essential to be able to locate it at all times. For this reason, the uniformity values are important to be considered in the design of these installations.



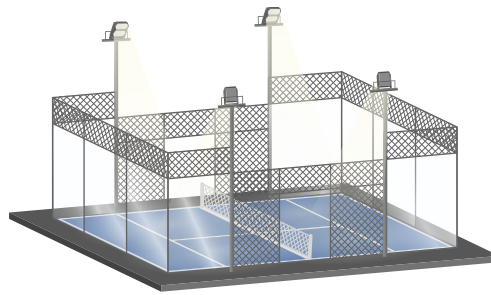
“Suma” Sports complex
Alfajar (Valencia, Spain)

Paddle court (Outdoor)

Class I

Lighting project of a 20x10m paddle court, according to UNE-EN 12193 "Standards for Sports and Recreational Facilities" (NIDE). Designed for high-level international and national competitions (CLASS I).

Lighting solution : NANTES L PLAY floodlights, achieving the average values specified as standard for this type of installation.

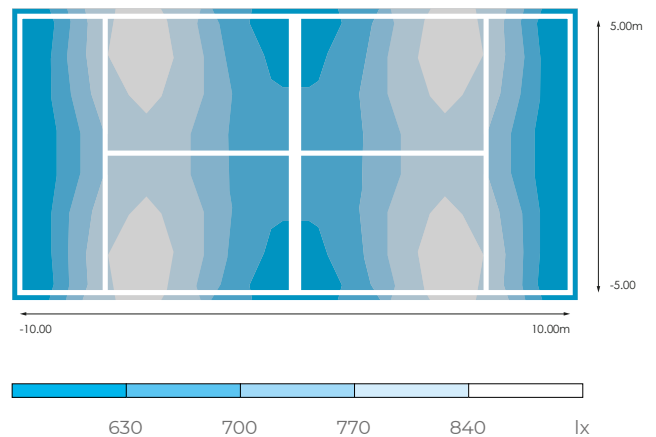


Data


Dimensions	20 x 10m
Surface Area	200m ²
Luminaire height	6m
Total power	1.672W
Power/m ²	8,36W/m ²
Total flux	220.328lm

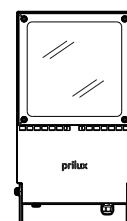
Illuminance

E_m	770lx	Uniformity U_o (E_{min}/E_m)	0,78
E_{min}	600lx		



Nantes L Play

Ud		W_T	ϕ_T
8	NANTES L 192LEDS 100mA 740 S-55	209W	27.541lm

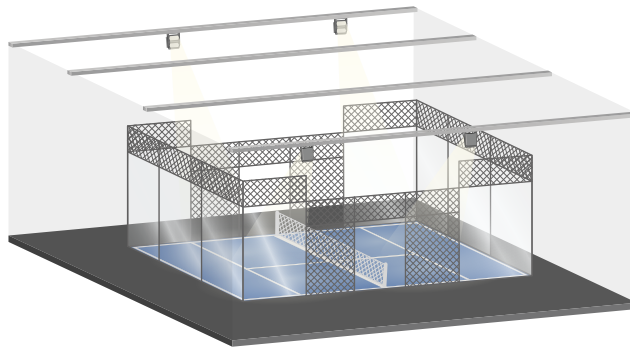


Paddle court (Indoor)

Class I

Lighting project of a 20x10m paddle court, according to UNE-EN 12193 "Standards for Sports and Recreational Facilities" (NIDE). Designed for high-level international and national competitions (CLASSI).

Lighting solution : HEXAGON MATCH UNITY floodlights, achieving the average values specified as standard for this type of installation.

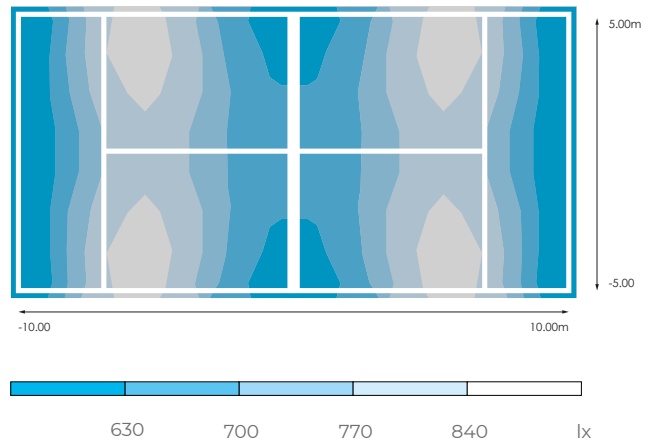


Data

Dimensions	20 x 10m
Surface Area	200m ²
Luminaire height	6m
Total power	2.184W
Power/m ²	10,92W/m ²
Total flux	277.496lm

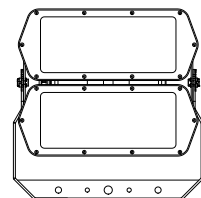
Illuminance

E_m	591lx	Uniformity $U_o (E_{min}/E_m)$	0,70
E_{min}	413lx		



Hexagon Match Unity

Ud		W_T	ϕ_T
4	HEXAGON MATCH UNITY 2X144LEDS 740 S-090	546W	69.374lm

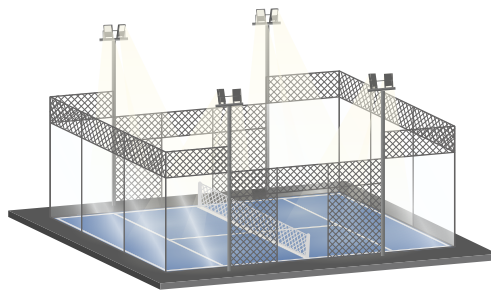


Paddle court (Outdoor)

Class II

Lighting project of a 20x10m paddle court, according to UNE-EN 12193 "Standards for Sports and Recreational Facilities" (NIDE). Designed for regional competitions and high-level training (CLASS II).

Lighting solution : NANTES PLAY floodlights, achieving the average values specified as standard for this type of installation.

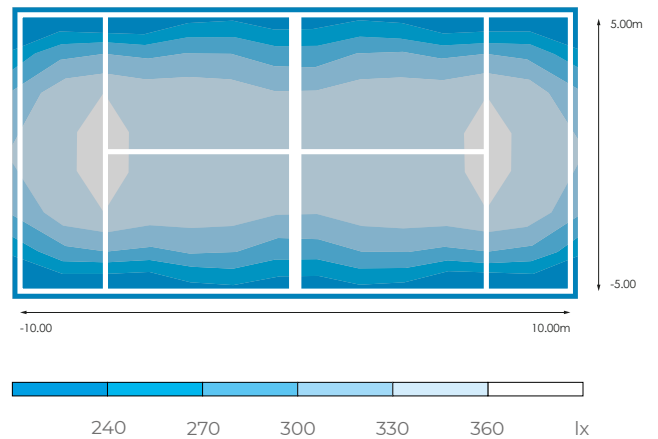


Data

Dimensions	20 x 10m
Surface Area	200m ²
Luminaire height	6m
Total power	944W
Power/m ²	4,72W/m ²
Total flux	120.720lm

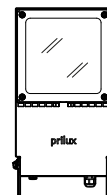
Illuminance

E_m	320lx	Uniformity U_o (E_{min}/E_m)	0,72
E_{min}	232lx		



Nantes Play

Ud		W_T	ϕ_T
8	NANTES PLAY 740 S-055	118W	15.090lm

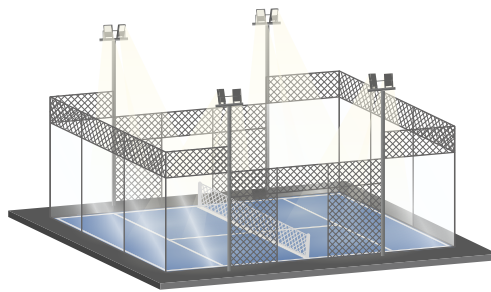


Paddle court (Outdoor)

Class III

Lighting project of a 20x10m paddle court, according to UNE-EN 12193 "Standards for Sports and Recreational Facilities" (NIDE). Designed for local competitions, training and recreational use (CLASS III).

Lighting solution : NANTES PLAY floodlights, achieving the average values specified as standard for this type of installation.

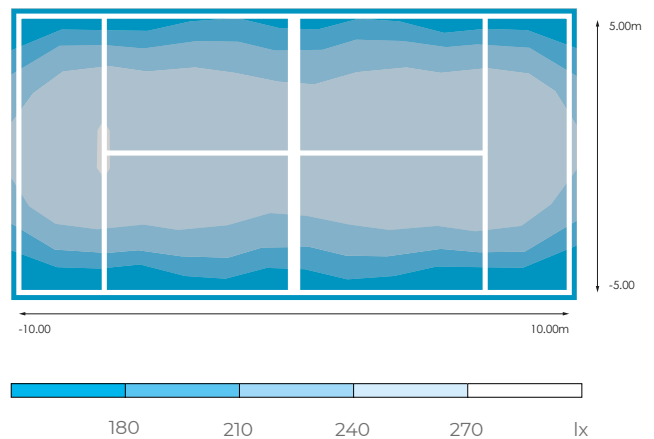


Data


Dimensions	20 x 10m
Surface Area	200m ²
Luminaire height	6m
Total power	632W
Power/m ²	3,16W/m ²
Total flux	93,104lm

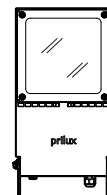
Illuminance

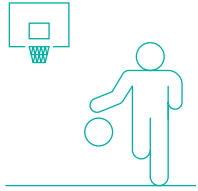
E_m	237lx	Uniformity U_o (E_{min}/E_m)	0,72
E_{min}	172lx		



Nantes Play

Ud		W_T	ϕ_T
8	NANTES 108LEDS 1.000mA 740 S-55	79W	11.638lm





Sports hall Lighting

The lighting solutions in indoor sports venues are aimed at providing proper viewing of the activity, which means that the ball must be visible and detectable anywhere on the court. To achieve this, it is essential to create contrasts between the objects on the court, and also for all areas of the floor to have the proper uniformity, making it essential to consider the level that the installation was designed for and glare limitation.



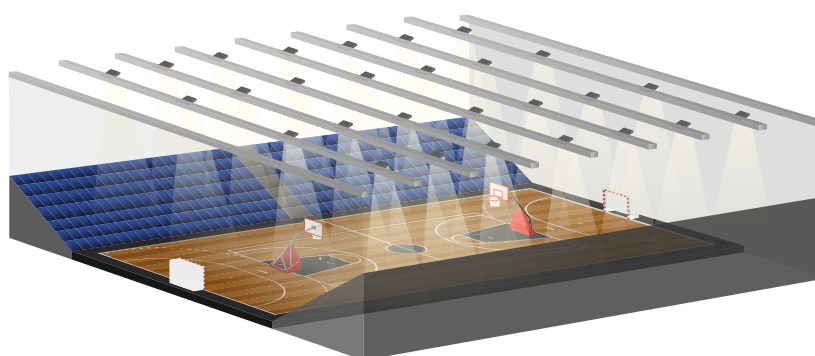
"El Zaburdón" Sports hall
San Lorenzo del Escorial (Madrid, Spain)

Sports hall

Class I

Lighting project of a 40x20m sports hall, according to UNE-EN 12193 "Standards for Sports and Recreational Facilities" (NIDE). Designed for high-level international and national competitions (CLASS I).

Lighting solution : NANTES L PLAY floodlights, achieving the average values specified as standard for this type of installation.

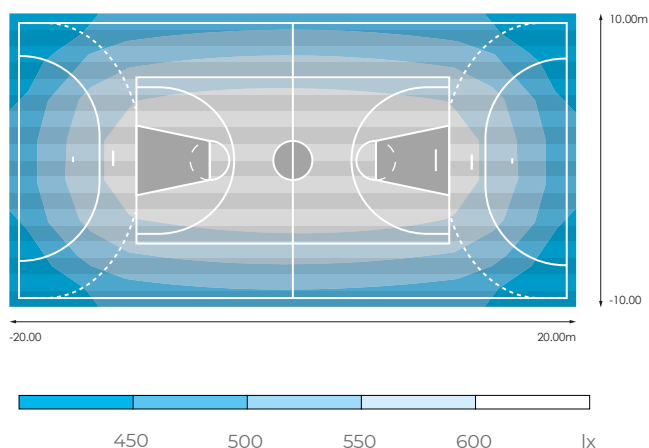


Data

Dimensions	40 x 20m
Surface Area	800m ²
Luminaire height	9m
Total power	5.852W
Power/m ²	7,31W/m ²
Total flux	771.148lm

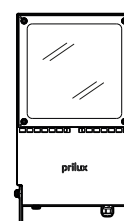
Illuminance

E_m	562lx	Uniformity U_o (E_{min}/E_m)	0,72
E_{min}	406lx		



Nantes L Play

Ud		W_T	ϕ_T
28	NANTES L PLAY 192LEDS 740 S-090	209W	27.541lm

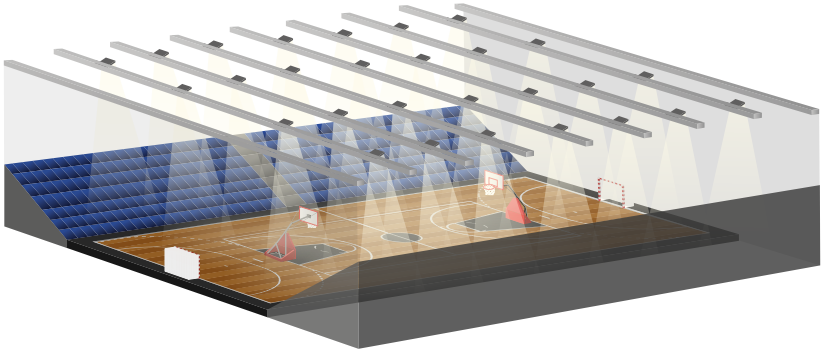


Sports hall

Class II

Lighting project of a 40x20m sports hall, according to UNE-EN 12193 "Standards for Sports and Recreational Facilities" (NIDE). Designed for regional competitions and high-level training (CLASS II).

Lighting solution : NANTES L PLAY floodlights, achieving the average values specified as standard for this type of installation.

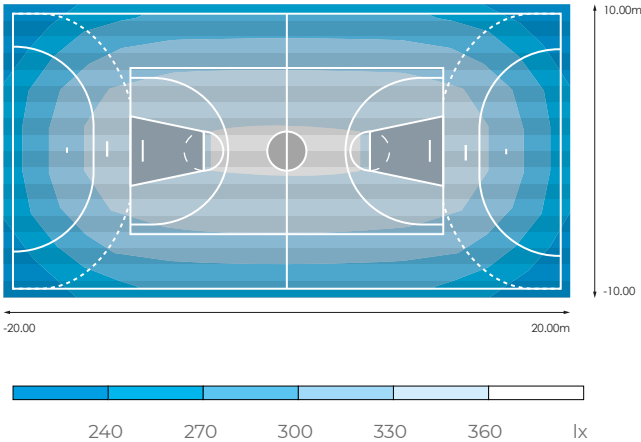


Data

Dimensions	40 x 20m
Surface Area	800m ²
Luminaire height	9m
Total power	2.744W
Power/m ²	3,43W/m ²
Total flux	433.496lm

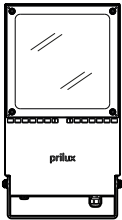
Illuminance

E_m	316lx	Uniformity $U_o (E_{min}/E_m)$	0,72
E_{min}	229lx		



Nantes L Play

Ud		W_T	ϕ_T
28	NANTES L PLAY 192LEDS 740 S-090	98W	15.482lm

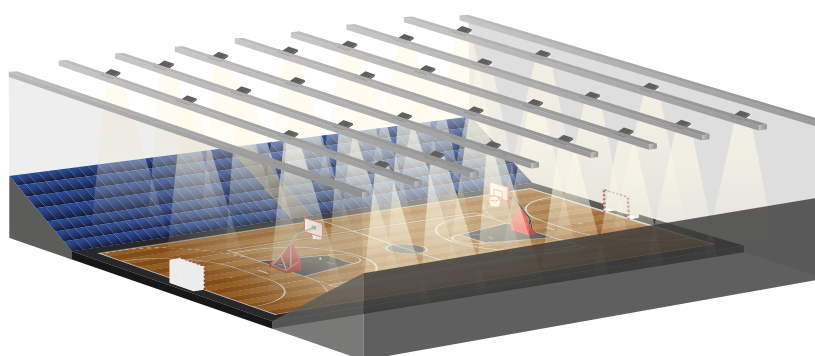


Sports hall

Class III

Lighting project of a 40x20m sports hall, according to UNE-EN 12193 "Standards for Sports and Recreational Facilities" (NIDE). Designed for Local competitions, training and recreational use (CLASS III).

Lighting solution : NANTES PLAY floodlights, achieving the average values specified as standard for this type of installation.

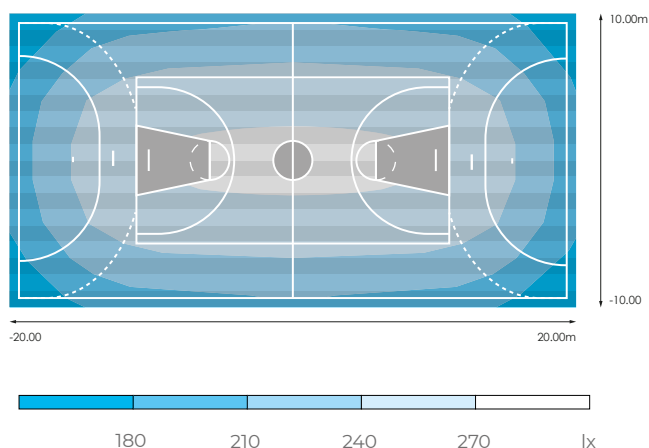


Data

Dimensions	40 x 20m
Surface Area	800m ²
Luminaire height	9m
Total power	2.212W
Power/m ²	2,76W/m ²
Total flux	325.892lm

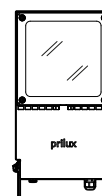
Illuminance

E_m	240lx	Uniformity U_o (E_{min}/E_m)	0,73
E_{min}	175lx		



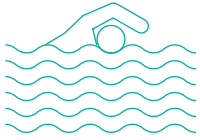
Nantes Play

Ud		W_T	ϕ_T
28	NANTES PLAY 108LEDS 700mA 790 S-055	79W	11.639lm





Sports hall
Ollas del Rey (Toledo, Spain)



Indoor pool lighting

Swimming pool lighting is essential for safety during use, especially for lifeguards and swimmers or users who may experience some kind of difficulty in the pool. For this reason, the design of the floodlight layout in the installation is a complex process that must be done in the early phases of execution due to the many the restrictions and indications marked in the standards.



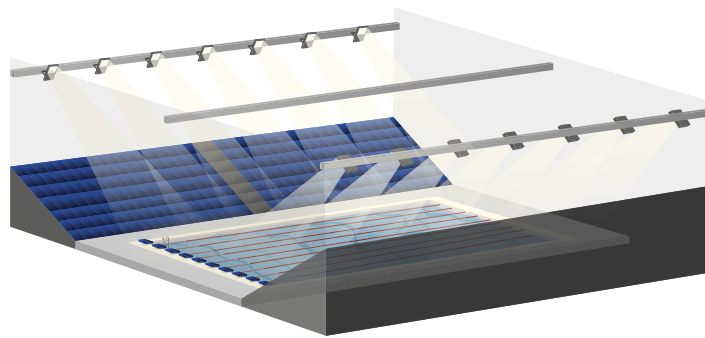
"UMA" Indoor pool
Murcia, Spain

Indoor pool

Class III

Lighting project of a 25x16.50m indoor pool, according to UNE-EN 12193 "Standards for Sports and Recreational Facilities" (NIDE). Designed for Local competitions, training and recreational use (CLASS III).

Lighting solution : NANTES L PLAY floodlights, achieving the average values specified as standard for this type of installation.

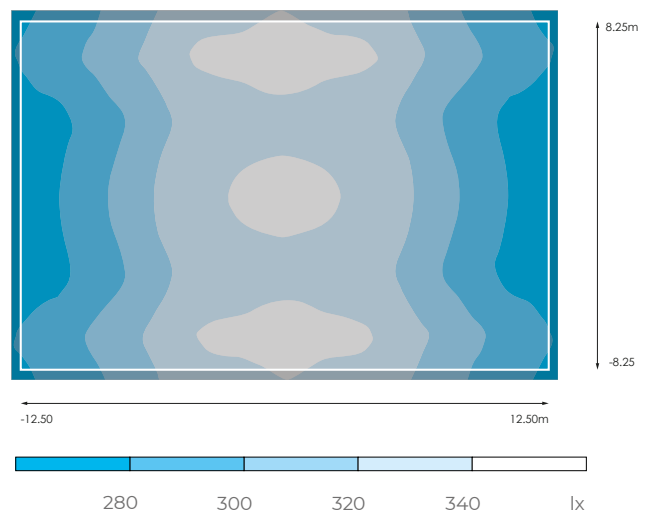


Data

Dimensions	25 x 16,50m
Surface Area	412.5m ²
Luminaire height	6m
Total power	1.666W
Power/m ²	2,08W/m ²
Total flux	264.440lm

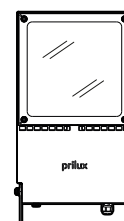
Illuminance

E_m	313lx	Uniformity U_o (E_{min}/E_m)	0,83
E_{min}	263lx		



Nantes L Play

Ud		W_T	ϕ_T
12	NANTES L PLAY 192LEDS 740 AV 60X145	138,8W	18.870lm





"El Zaburdón" Sports complex
San Lorenzo del Escorial (Madrid, Spain)

